

2001  
Floyd, Chickasaw & Howard Counties, Iowa  
Iowa North Zone (1401)  
NAD\_83(1996)

Point Number: **307**

Northing: **3809924.37**(Ft)      Easting: **5048537.46**(Ft)

Northing: **1161267.271**(M)      Easting: **1538797.297**(M)

Elev: **1095.53**(Ft) NAVD\_88

Elev: **333.918**(M) NAVD\_88      Ellip Ht: **303.897**(M)      96C Geoid Ht: **-30.021**(M)

Latitude: **42-57-03.08951** N      Longitude: **93-01-28.39707** W

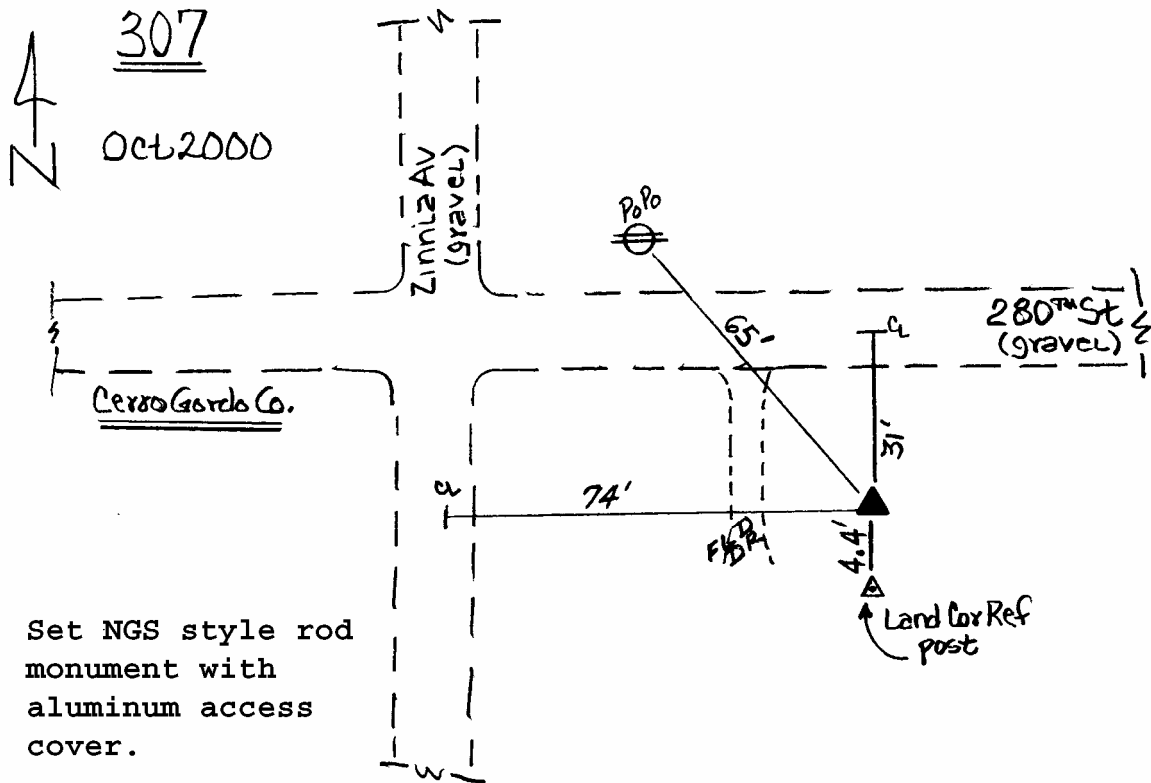
Theta: **0-19-20.03**      Combination Factor: **0.99990987**

Designation: **FLOYD CO GPS CONTROL PT 2000-307**

**Monument Type:** 5/8" dia driven aluminum rod with a 2-1/2" dia aluminum cap and permanent magnet encased in a 5" dia PVC pipe with an aluminum access cover.

**To Reach:** 75ft E of Zinnia Ave, 30ft S of 280th St. near the NW Cor of Sec 19 T94N R18W.

Date Printed January 17, 2001



Set NGS style rod monument with aluminum access cover.