

2001
Floyd, Chickasaw & Howard Counties, Iowa
Iowa North Zone (1401)
NAD_83(1996)

Point Number: **328**

Northing: **3858299.87**(Ft) Easting: **5094986.91**(Ft)

Northing: **1176012.153**(M) Easting: **1552955.116**(M)

Elev: **1100.69**(Ft) NAVD_88

Elev: **335.491**(M) NAVD_88 Ellip Ht: **304.972**(M) 96C Geoid Ht: **-30.519**(M)

Latitude: **43-04-57.85328** N Longitude: **92-50-58.82028** W

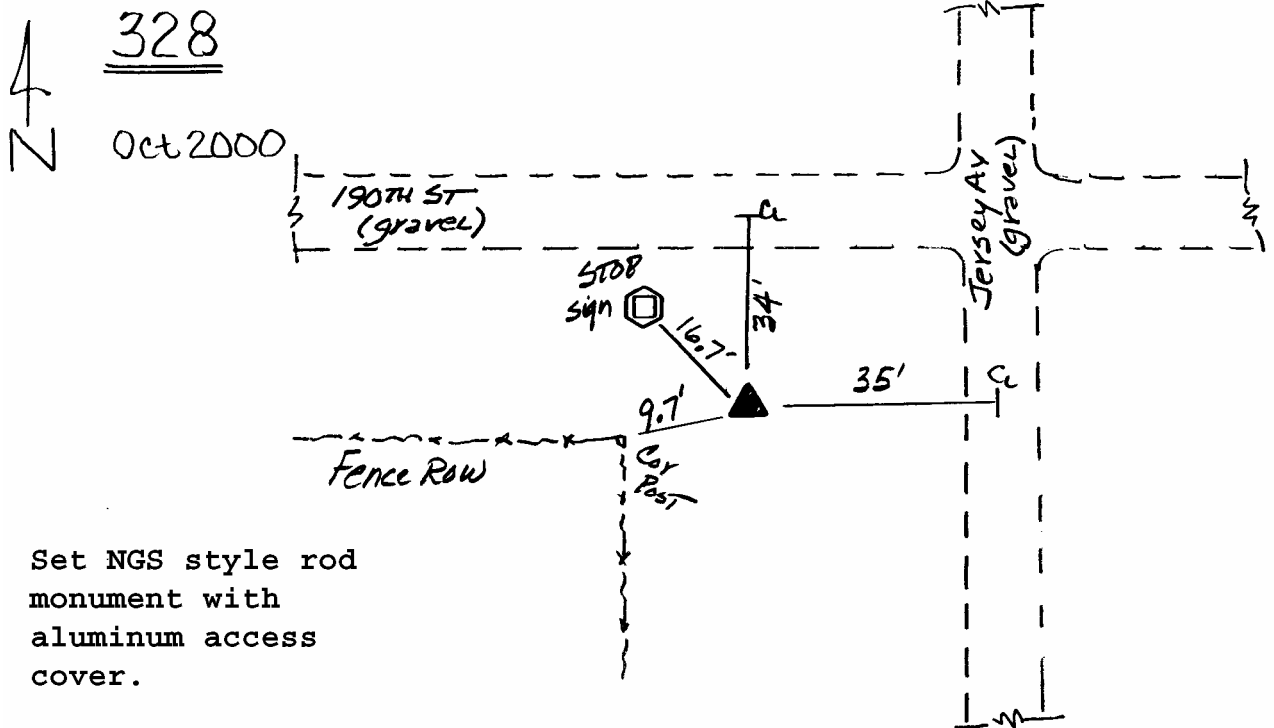
Theta: **0-26-26.72** Combination Factor: **0.99992372**

Designation: **FLOYD CO GPS CONTROL PT 2000-328**

Monument Type: 5/8" dia driven aluminum rod with a 2-1/2" dia aluminum cap and permanent magnet encased in a 5" dia PVC pipe with an aluminum access cover.

To Reach: 35ft W of Jersey Ave, 35ft S of 190th St. near the NE Cor of Sec 4 T95N R17W.

Date Printed January 17, 2001



Set NGS style rod
monument with
aluminum access
cover.