

2001  
Floyd, Chickasaw & Howard Counties, Iowa  
Iowa North Zone (1401)  
NAD\_83(1996)

Point Number: **345**

Northing: **3842359.89**(Ft)      Easting: **5126600.40**(Ft)

Northing: **1171153.636**(M)      Easting: **1562590.928**(M)

Elev: **1096.32**(Ft) NAVD\_88

Elev: **334.160**(M) NAVD\_88      Ellip Ht: **303.255**(M)      96C Geoid Ht: **-30.904**(M)

Latitude: **43-02-17.79397** N      Longitude: **92-43-54.78811** W

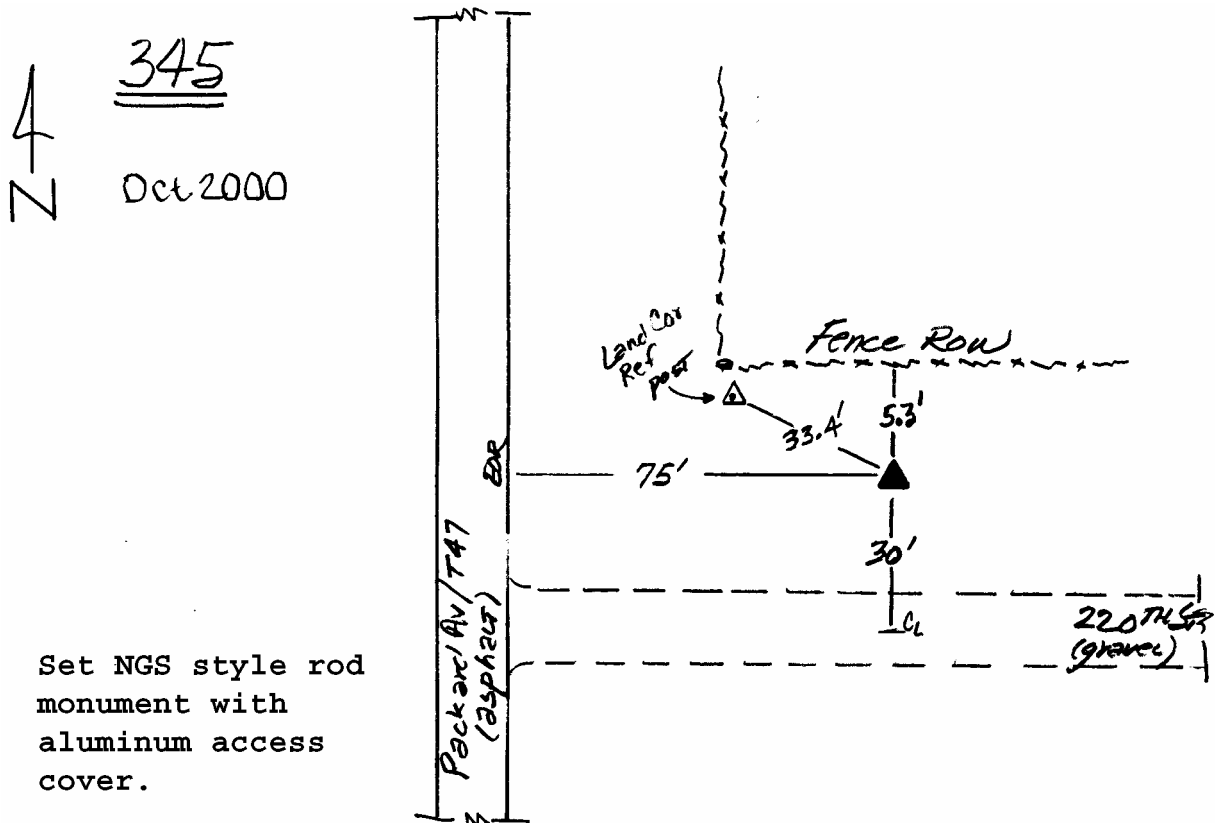
Theta: **0-31-14.11**      Combination Factor: **0.99991867**

Designation: **FLOYD CO GPS CONTROL PT 2000-345**

**Monument Type:** 5/8" dia driven aluminum rod with a 2-1/2" dia aluminum cap and permanent magnet encased in a 5" dia PVC pipe with an aluminum access cover.

**To Reach:** 75ft E of Packard Ave (T 47), 30ft N of 220th St. near the SW Cor of Sec 15 T95N R16W.

Date Printed January 17, 2001



Set NGS style rod monument with aluminum access cover.