

2001
Floyd, Chickasaw & Howard Counties, Iowa
Iowa North Zone (1401)
NAD_83(1996)

Point Number: **349**

Northing: **3905972.89**(Ft) Easting: **5141772.23**(Ft)

Northing: **1190542.918**(M) Easting: **1567215.309**(M)

Elev: **1080.25**(Ft) NAVD_88

Elev: **329.262**(M) NAVD_88 Ellip Ht: **298.709**(M) 96C Geoid Ht: **-30.554**(M)

Latitude: **43-12-44.66901** N Longitude: **92-40-22.11823** W

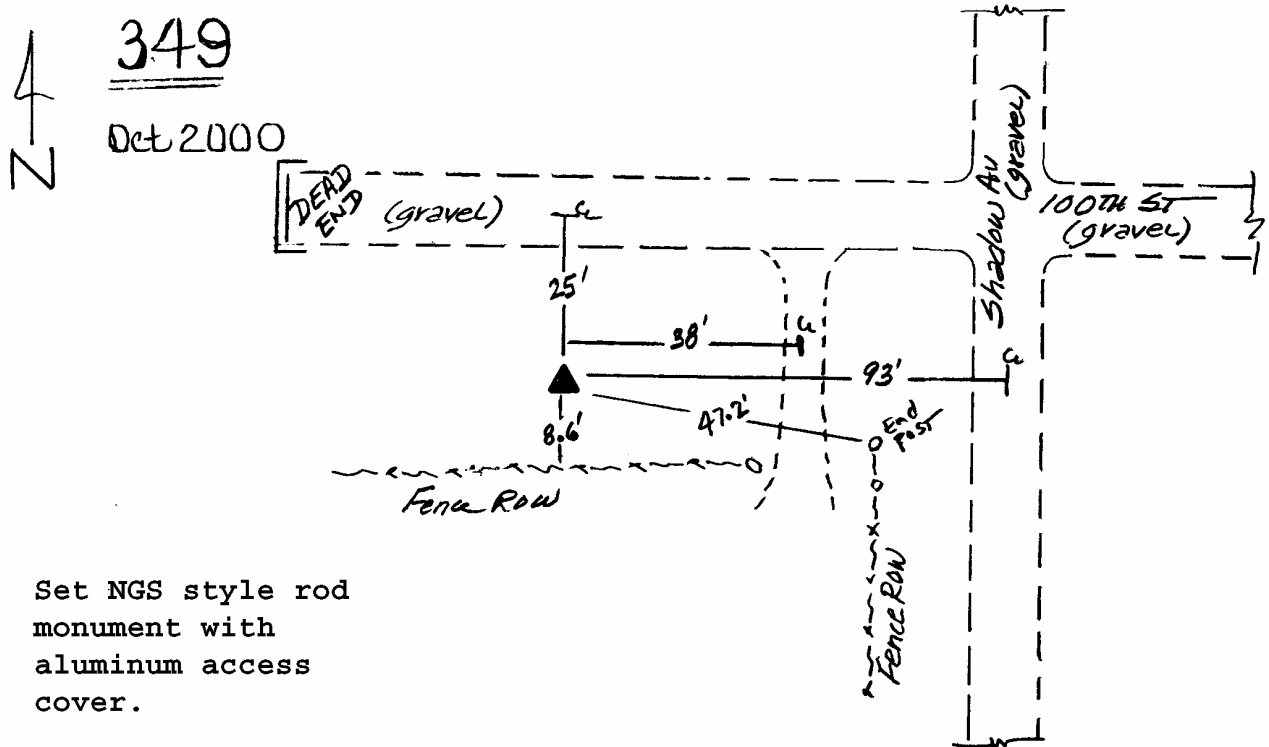
Theta: **0-33-38.24** Combination Factor: **0.99994366**

Designation: **FLOYD CO GPS CONTROL PT 2000-349**

Monument Type: 5/8" dia driven aluminum rod with a 2-1/2" dia aluminum cap and permanent magnet encased in a 5" dia PVC pipe with an aluminum access cover.

To Reach: 90ft W of Shadow Ave, 25ft S of 100th St. near the NE Cor of Sec 24 T97N R16W.

Date Printed January 17, 2001



Set NGS style rod
monument with
aluminum access
cover.