

GPS SURVEY MARK DESCRIPTION

GIS MAPPING BY:
THE SIDWELL COMPANY
WEST CHICAGO, ILLINOIS

THE OFFICE OF THE
COUNTY ENGINEER
CLAY COUNTY, IOWA

DESIGNATION 963806 4 GPS No. 7003 COUNTY CLAY STATE IOWA
 LOCATED IN SECTION 6 TWP 96 N RGE 38 W USGS QUAD MAP HARTLEY
 TO REACH FROM _____

IN THE SOUTHEAST QUADRANT OF THE INTERSECTION OF 330TH STREET AND
 100TH AVENUE (CLAY - O'BRIEN COUNTY LINE).

MARK 3-1/4" ALUMINUM DISK SET IN POURED-IN-PLACE CONCRETE MONUMENT WITH 10" PVC COLLAR

MARK EXISTING VALUES AS PUBLISHED BY _____

MARK SET VALUES ESTABLISHED BY DENI ASSOCIATES, INC. DATE OCTOBER 1997

HORIZONTAL VALUES ORIGINATED ON ORDER "B" IOWA HIGH ACCURACY REFERENCE NETWORK (HARN) CONTROL ESTABLISHED BY THE NATIONAL GEODETIC SURVEY AND BASED ON THE NORTH AMERICAN DATUM OF 1983, 1996 ADJUSTMENT.

IOWA COORDINATE SYSTEM, NORTH ZONE SCALE FACTOR: 0.99998372

COORDINATES (US FEET)

COORDINATES (METERS)

NORTHING (Y) 3894952.257

NORTHING (Y) 1187183.822

EASTING (X) 4417676.870

EASTING (X) 1346510.603

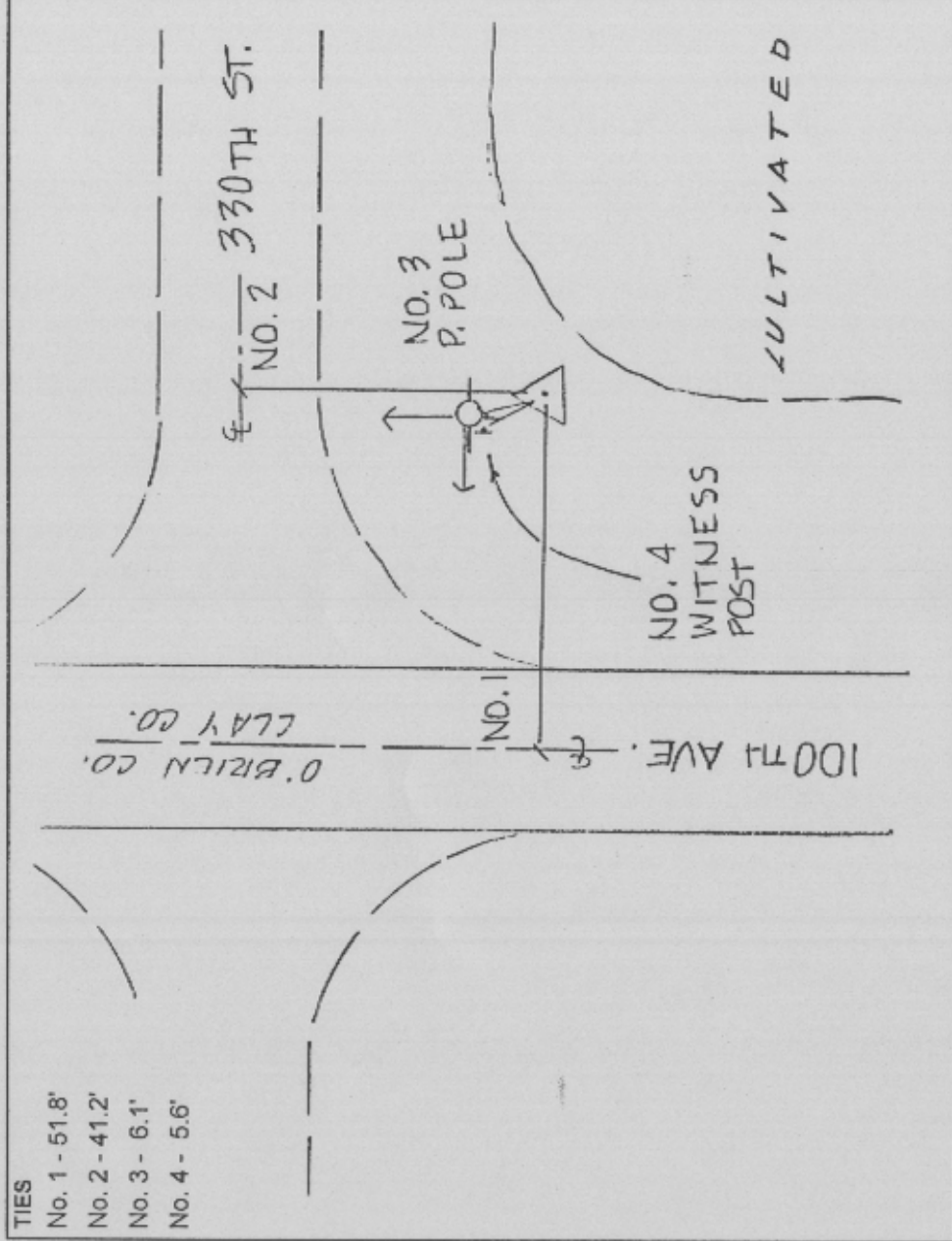
VERTICAL VALUES ORIGINATED ON VERTICAL CONTROL ESTABLISHED BY THE NATIONAL GEODETIC SURVEY AND / OR THE U.S. GEOLOGICAL SURVEY AND BASED ON THE NORTH AMERICAN VERTICAL DATUM OF 1988.

ELEVATION (US FEET) 1366.72

ELEVATION (METERS) 416.577

TIES

- No. 1 - 51.8'
- No. 2 - 41.2'
- No. 3 - 6.1'
- No. 4 - 5.6'



SKETCH BY DSW
 DENI 9709001