

# GPS SURVEY MARK DESCRIPTION

GIS MAPPING BY:  
THE SIDWELL COMPANY  
WEST CHICAGO, ILLINOIS

THE OFFICE OF THE  
COUNTY ENGINEER  
CLAY COUNTY, IOWA

DESIGNATION 943724 1 GPS No. 7044 COUNTY CLAY STATE IOWA  
 LOCATED IN SECTION 24 TWP 94 N RGE 37 W USGS QUAD MAP SIoux RAPIDS  
 TO REACH FROM THE INTERSECTION OF 480TH STREET / COUNTY ROAD B63 AND  
U.S. HIGHWAY 71; GO EASTERLY 0.35 MILE TO MARK.

MARK 3-1/4" ALUMINUM DISK SET IN POURED-IN-PLACE CONCRETE MONUMENT WITH 10" PVC COLLAR

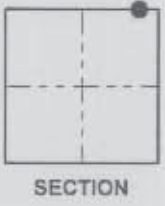
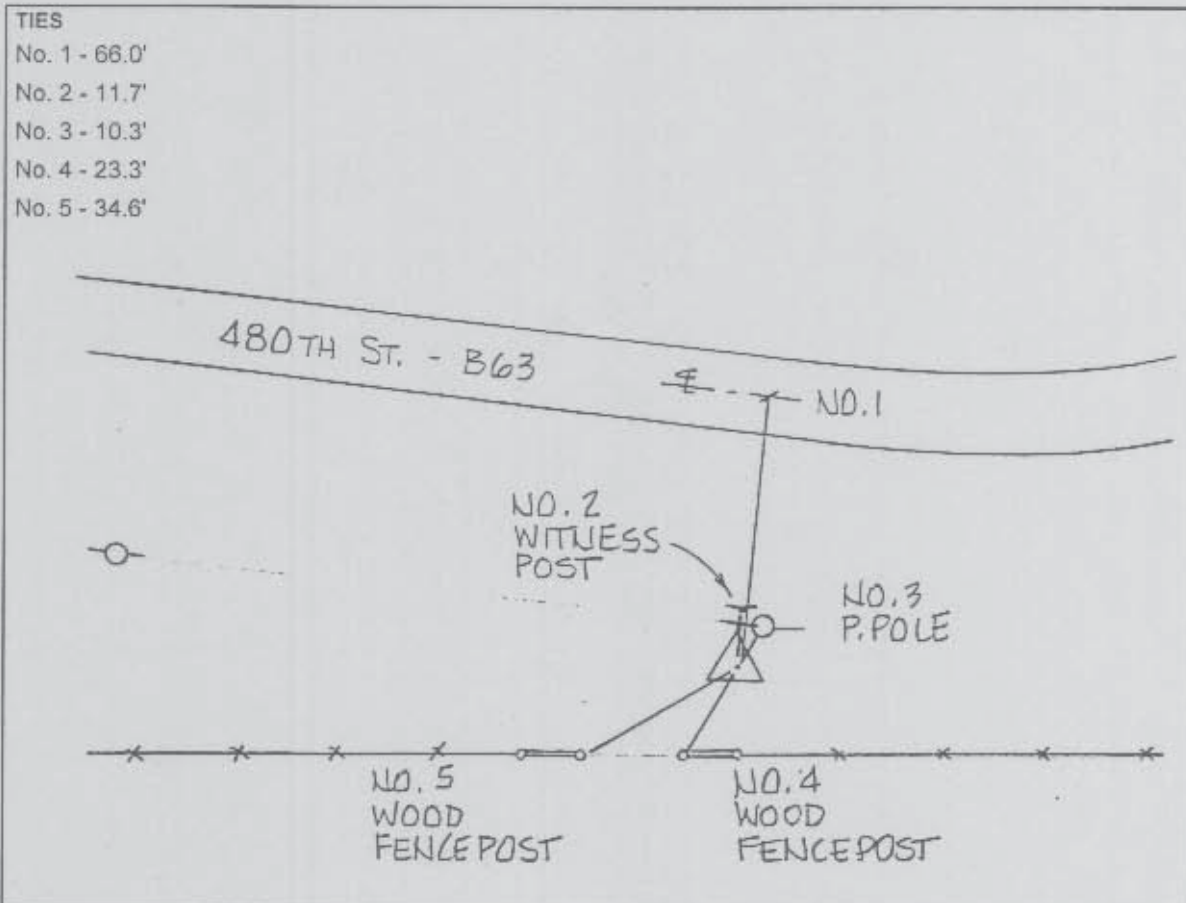
MARK EXISTING     VALUES AS PUBLISHED BY \_\_\_\_\_  
 MARK SET         VALUES ESTABLISHED BY DENI ASSOCIATES, INC. DATE OCTOBER 1997

HORIZONTAL VALUES ORIGINATED ON ORDER "B" IOWA HIGH ACCURACY REFERENCE NETWORK (HARN) CONTROL ESTABLISHED BY THE NATIONAL GEODETIC SURVEY AND BASED ON THE NORTH AMERICAN DATUM OF 1983, 1996 ADJUSTMENT.

IOWA COORDINATE SYSTEM, NORTH ZONE	SCALE FACTOR: <u>0.99995777</u>
COORDINATES (US FEET)	COORDINATES (METERS)
NORTHING (Y) <u>3814807.631</u>	NORTHING (Y) <u>1162755.691</u>
EASTING (X) <u>4478498.921</u>	EASTING (X) <u>1365049.201</u>

VERTICAL VALUES ORIGINATED ON VERTICAL CONTROL ESTABLISHED BY THE NATIONAL GEODETIC SURVEY AND / OR THE U.S. GEOLOGICAL SURVEY AND BASED ON THE NORTH AMERICAN VERTICAL DATUM OF 1988.

ELEVATION (US FEET) <u>1339.64</u>	ELEVATION (METERS) <u>408.322</u>
------------------------------------	-----------------------------------



SKETCH  
BY DSW  
DENI 9709001