

# GPS SURVEY MARK DESCRIPTION

GIS MAPPING BY:  
THE SIDWELL COMPANY  
WEST CHICAGO, ILLINOIS

THE OFFICE OF THE  
COUNTY ENGINEER  
CLAY COUNTY, IOWA

DESIGNATION 973518 3 GPS No. 7056 COUNTY CLAY STATE IOWA

LOCATED IN SECTION 18 TWP 97 N RGE 35 W USGS QUAD MAP DICKENS

TO REACH FROM \_\_\_\_\_  
IN THE NORTHEAST QUADRANT OF THE INTERSECTION OF 300TH STREET / COUNTY ROAD B17  
AND 280TH AVENUE.

MARK 3-1/4" ALUMINUM DISK SET IN POURED-IN-PLACE CONCRETE MONUMENT WITH 10" PVC COLLAR

MARK EXISTING     VALUES AS PUBLISHED BY \_\_\_\_\_  
 MARK SET         VALUES ESTABLISHED BY DENI ASSOCIATES, INC. DATE OCTOBER 1997

HORIZONTAL VALUES ORIGINATED ON ORDER "B" IOWA HIGH ACCURACY REFERENCE NETWORK (HARN) CONTROL ESTABLISHED BY THE NATIONAL GEODETIC SURVEY AND BASED ON THE NORTH AMERICAN DATUM OF 1983, 1996 ADJUSTMENT.

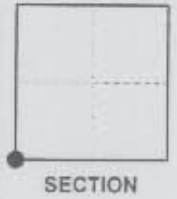
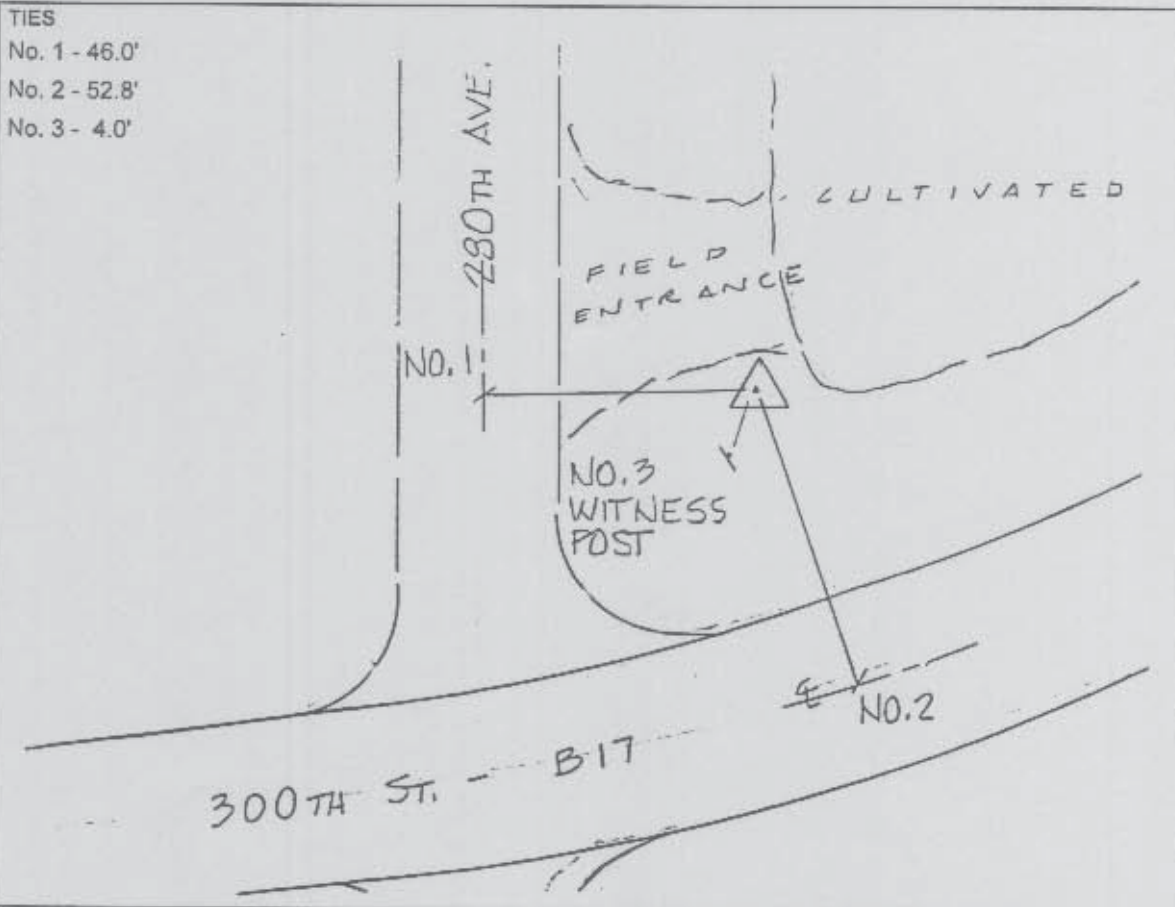
IOWA COORDINATE SYSTEM, NORTH ZONE	SCALE FACTOR: <u>0.99999062</u>
COORDINATES (US FEET)	COORDINATES (METERS)
NORTHING (Y) <u>3908781.009</u>	NORTHING (Y) <u>1191398.834</u>
EASTING (X) <u>4512621.798</u>	EASTING (X) <u>1375449.875</u>

VERTICAL VALUES ORIGINATED ON VERTICAL CONTROL ESTABLISHED BY THE NATIONAL GEODETIC SURVEY AND/OR THE U.S. GEOLOGICAL SURVEY AND BASED ON THE NORTH AMERICAN VERTICAL DATUM OF 1988.

ELEVATION (US FEET) 1376.44 ELEVATION (METERS) 419.539

**TIES**

- No. 1 - 46.0'
- No. 2 - 52.8'
- No. 3 - 4.0'



SKETCH  
BY DSW  
DENI 9709001