

GPS SURVEY MARK DESCRIPTION

GIS MAPPING BY:
THE SIDWELL COMPANY
WEST CHICAGO, ILLINOIS

THE OFFICE OF THE
COUNTY ENGINEER
CLAY COUNTY, IOWA

DESIGNATION 963636 2 GPS No. 7059 COUNTY CLAY STATE IOWA

LOCATED IN SECTION 36 TWP 96 N RGE 36 W USGS QUAD MAP GILLETT GROVE

TO REACH FROM _____

IN THE NORTHWEST QUADRANT OF THE INTERSECTION OF 390TH STREET / COUNTY ROAD B40

AND 280TH AVENUE / COUNTY ROAD M54.

MARK 3-1/4" ALUMINUM DISK SET IN POURED-IN-PLACE CONCRETE MONUMENT WITH 10" PVC COLLAR

MARK EXISTING VALUES AS PUBLISHED BY _____

MARK SET VALUES ESTABLISHED BY DENI ASSOCIATES, INC. DATE OCTOBER 1997

HORIZONTAL VALUES ORIGINATED ON ORDER "B" IOWA HIGH ACCURACY REFERENCE NETWORK (HARN) CONTROL ESTABLISHED BY THE NATIONAL GEODETIC SURVEY AND BASED ON THE NORTH AMERICAN DATUM OF 1983, 1996 ADJUSTMENT.

IOWA COORDINATE SYSTEM, NORTH ZONE

SCALE FACTOR: 0.99997169

COORDINATES (US FEET)

COORDINATES (METERS)

NORTHING (Y) 3861685.840

NORTHING (Y) 1177044.198

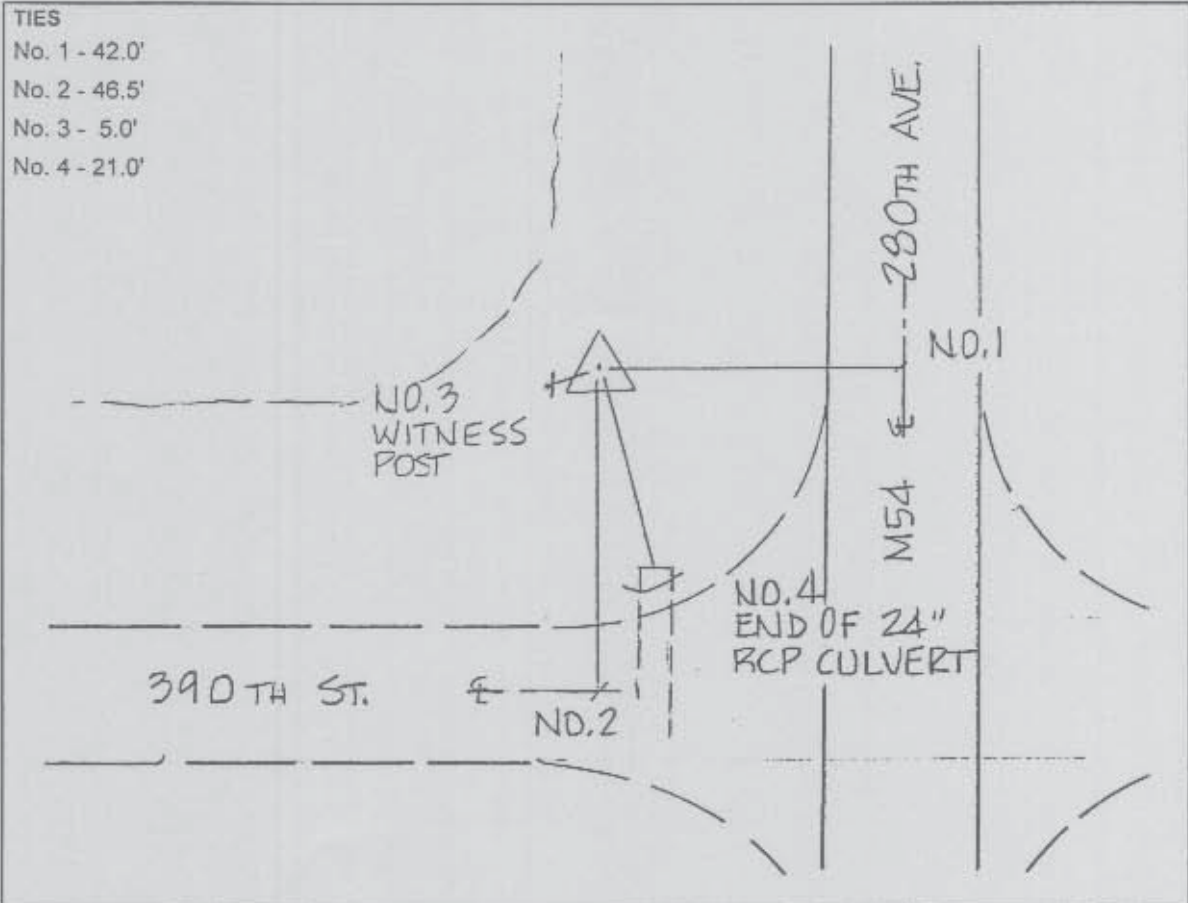
EASTING (X) 4511676.615

EASTING (X) 1375161.783

VERTICAL VALUES ORIGINATED ON VERTICAL CONTROL ESTABLISHED BY THE NATIONAL GEODETIC SURVEY AND / OR THE U.S. GEOLOGICAL SURVEY AND BASED ON THE NORTH AMERICAN VERTICAL DATUM OF 1988.

ELEVATION (US FEET) 1374.07

ELEVATION (METERS) 418.817



SKETCH
BY DSW
DENI 9709001