

GPS SURVEY MARK DESCRIPTION

GIS MAPPING BY:
THE SIDWELL COMPANY
WEST CHICAGO, ILLINOIS

THE OFFICE OF THE
COUNTY ENGINEER
CLAY COUNTY, IOWA

DESIGNATION 943613 2 GPS No. 7062 COUNTY CLAY STATE IOWA
 LOCATED IN SECTION 13 TWP 94 N RGE 36 W USGS QUAD MAP WEBB
 TO REACH FROM _____

IN THE NORTHWEST QUADRANT OF A "T" INTERSECTION TO NORTH OF
 480TH STREET / COUNTY ROAD B63 AND 280TH AVENUE.
 RAILROAD IS SCHEDULED TO BE ABANDONED.

MARK 3-1/4" ALUMINUM DISK SET IN POURED-IN-PLACE CONCRETE MONUMENT WITH 10" PVC COLLAR

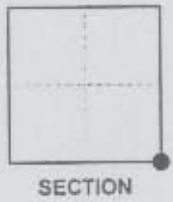
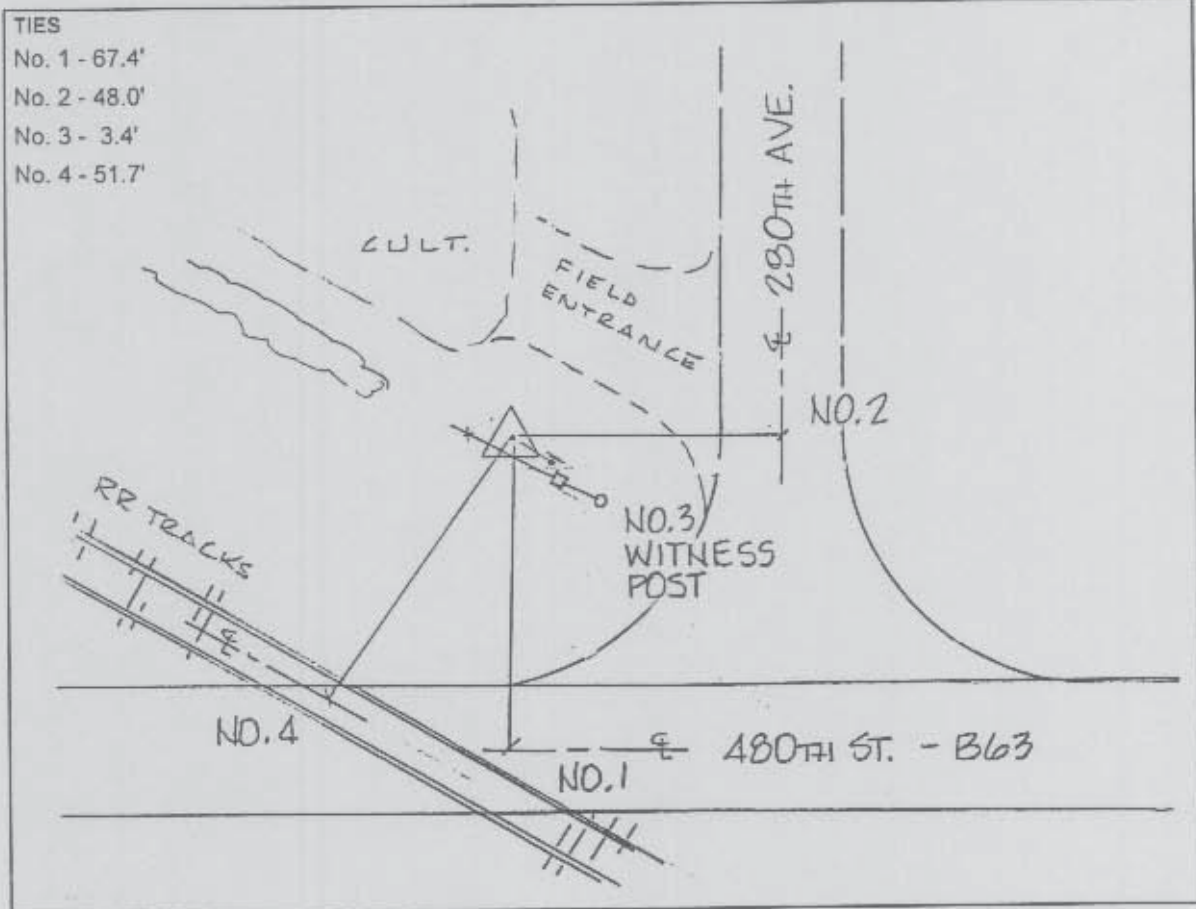
MARK EXISTING VALUES AS PUBLISHED BY _____
 MARK SET VALUES ESTABLISHED BY DENI ASSOCIATES, INC. DATE OCTOBER 1997

HORIZONTAL VALUES ORIGINATED ON ORDER "B" IOWA HIGH ACCURACY REFERENCE NETWORK (HARN) CONTROL ESTABLISHED BY THE NATIONAL GEODETIC SURVEY AND BASED ON THE NORTH AMERICAN DATUM OF 1983, 1996 ADJUSTMENT.

IOWA COORDINATE SYSTEM, NORTH ZONE	SCALE FACTOR: <u>0.99995778</u>
COORDINATES (US FEET)	COORDINATES (METERS)
NORTHING (Y) <u>3814236.706</u>	NORTHING (Y) <u>1162581.673</u>
EASTING (X) <u>4510631.437</u>	EASTING (X) <u>1374843.212</u>

VERTICAL VALUES ORIGINATED ON VERTICAL CONTROL ESTABLISHED BY THE NATIONAL GEODETIC SURVEY AND / OR THE U.S. GEOLOGICAL SURVEY AND BASED ON THE NORTH AMERICAN VERTICAL DATUM OF 1988.

ELEVATION (US FEET) 1348.09 ELEVATION (METERS) 410.898



SKETCH
BY DSW
DENI 9709001