

GPS SURVEY MARK DESCRIPTION

GIS MAPPING BY:
THE SIDWELL COMPANY
WEST CHICAGO, ILLINOIS

THE OFFICE OF THE
COUNTY ENGINEER
CLAY COUNTY, IOWA

DESIGNATION 943515 3 GPS No. 7067 COUNTY CLAY STATE IOWA

LOCATED IN SECTION 15 TWP 95 N RGE 35 W USGS QUAD MAP SILVER LAKE

TO REACH FROM _____

IN THE NORTHEAST QUADRANT OF THE INTERSECTION OF 420TH STREET

AND 310TH AVENUE / COUNTY ROAD N14.

MARK 3-1/4" ALUMINUM DISK SET IN POURED-IN-PLACE CONCRETE MONUMENT WITH 10" PVC COLLAR

MARK EXISTING VALUES AS PUBLISHED BY _____

MARK SET VALUES ESTABLISHED BY DENI ASSOCIATES, INC. DATE OCTOBER 1997

HORIZONTAL VALUES ORIGINATED ON ORDER "B" IOWA HIGH ACCURACY REFERENCE NETWORK (HARN) CONTROL ESTABLISHED BY THE NATIONAL GEODETIC SURVEY AND BASED ON THE NORTH AMERICAN DATUM OF 1983, 1996 ADJUSTMENT.

IOWA COORDINATE SYSTEM, NORTH ZONE

SCALE FACTOR: 0.99996637

COORDINATES (US FEET)

COORDINATES (METERS)

NORTHING (Y) 3845215.854

NORTHING (Y) 1172024.136

EASTING (X) 4527425.560

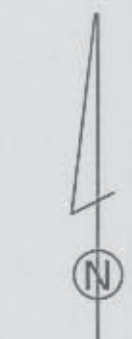
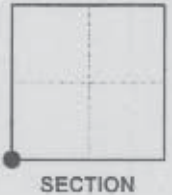
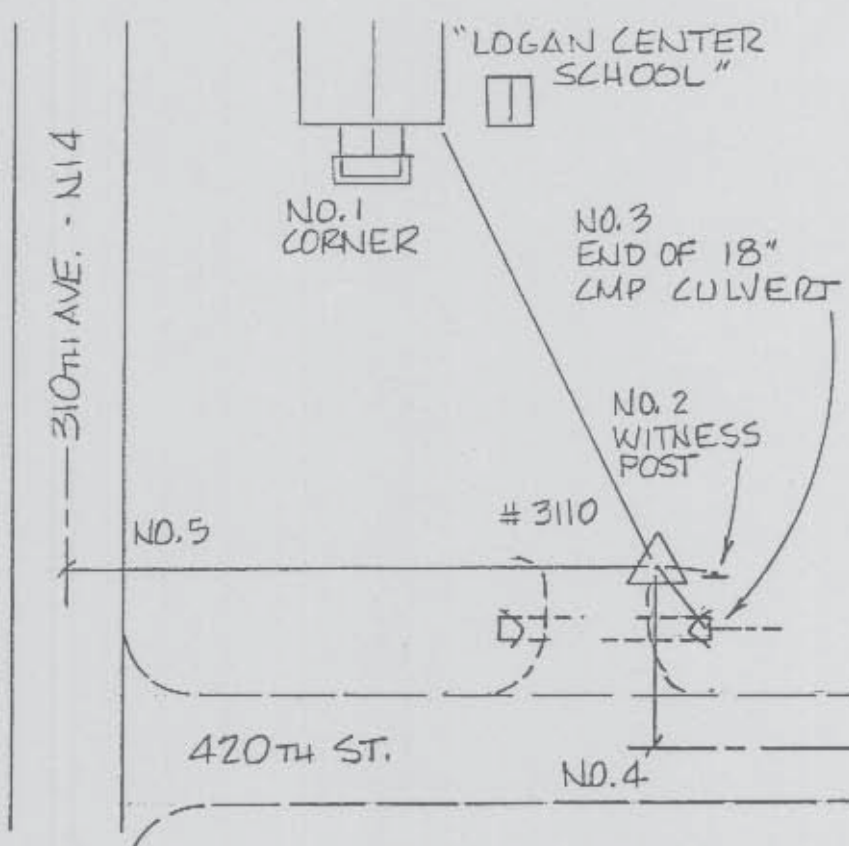
EASTING (X) 1379962.071

VERTICAL VALUES ORIGINATED ON VERTICAL CONTROL ESTABLISHED BY THE NATIONAL GEODETIC SURVEY AND / OR THE U.S. GEOLOGICAL SURVEY AND BASED ON THE NORTH AMERICAN VERTICAL DATUM OF 1988.

ELEVATION (US FEET) 1438.32

ELEVATION (METERS) 438.402

- TIES
- No. 1 - 95.8'
 - No. 2 - 8.7'
 - No. 3 - 12.4'
 - No. 4 - 38.0'
 - No. 5 - 112.8'



SKETCH
BY DSW
DENI 9709001