

GPS SURVEY MARK DESCRIPTION

GIS MAPPING BY:
THE SIDWELL COMPANY
WEST CHICAGO, ILLINOIS

THE OFFICE OF THE
COUNTY ENGINEER
CLAY COUNTY, IOWA

DESIGNATION 973521 1 GPS No. 7071 COUNTY CLAY STATE IOWA

LOCATED IN SECTION 21 TWP 97 N RGE 35 W USGS QUAD MAP RUTHVEN

TO REACH FROM _____
IN THE SOUTHWEST QUADRANT OF THE INTERSECTION OF 300TH STREET / COUNTY ROAD B17
AND 310TH AVENUE / COUNTY ROAD N14.

MARK 3-1/4" ALUMINUM DISK SET IN POURED-IN-PLACE CONCRETE MONUMENT WITH 10" PVC COLLAR

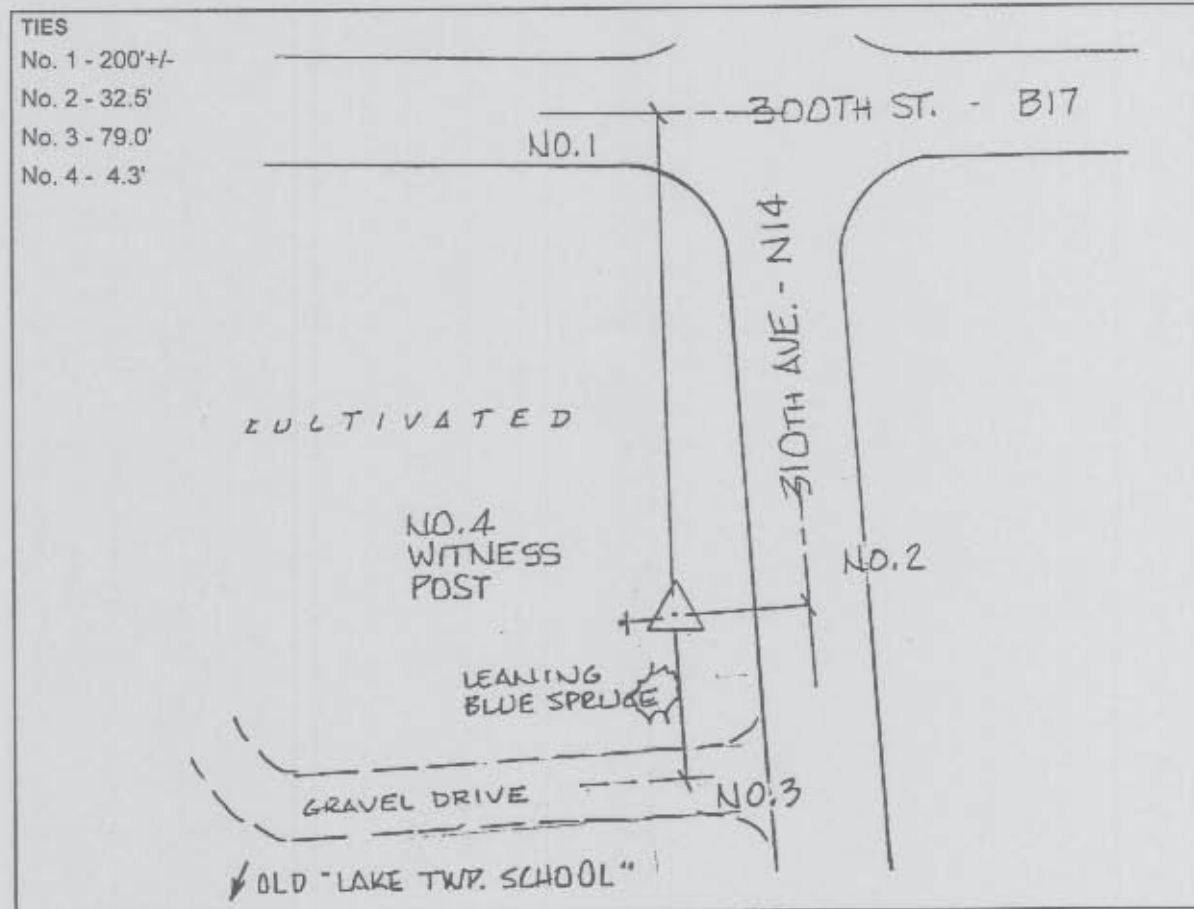
MARK EXISTING VALUES AS PUBLISHED BY _____
 MARK SET VALUES ESTABLISHED BY DENI ASSOCIATES, INC. DATE OCTOBER 1997

HORIZONTAL VALUES ORIGINATED ON ORDER "B" IOWA HIGH ACCURACY REFERENCE NETWORK (HARN) CONTROL ESTABLISHED BY THE NATIONAL GEODETIC SURVEY AND BASED ON THE NORTH AMERICAN DATUM OF 1983, 1996 ADJUSTMENT.

IOWA COORDINATE SYSTEM, NORTH ZONE	SCALE FACTOR: <u>0.99999096</u>
COORDINATES (US FEET)	COORDINATES (METERS)
NORTHING (Y) <u>3909264.692</u>	NORTHING (Y) <u>1191546.261</u>
EASTING (X) <u>4527687.273</u>	EASTING (X) <u>1380041.841</u>

VERTICAL VALUES ORIGINATED ON VERTICAL CONTROL ESTABLISHED BY THE NATIONAL GEODETIC SURVEY AND/OR THE U.S. GEOLOGICAL SURVEY AND BASED ON THE NORTH AMERICAN VERTICAL DATUM OF 1988.

ELEVATION (US FEET) 1354.91 ELEVATION (METERS) 412.978



SECTION



SKETCH
BY DSW

DENI 9709001