

GPS SURVEY MARK DESCRIPTION

GIS MAPPING BY:
THE SIDWELL COMPANY
WEST CHICAGO, ILLINOIS

THE OFFICE OF THE
COUNTY ENGINEER
CLAY COUNTY, IOWA

DESIGNATION 963536 2 GPS No. 7077 COUNTY CLAY STATE IOWA

LOCATED IN SECTION 36 TWP 96 N RGE 35 W USGS QUAD MAP SILVER LAKE

TO REACH FROM _____

AT THE "T" INTERSECTION TO EAST OF 390TH STREET / COUNTY ROAD B40

AND 340TH AVENUE / COUNTY ROAD N18 (CLAY - PALO ALTO COUNTY LINE).

MARK 3-1/4" ALUMINUM DISK SET IN POURED-IN-PLACE CONCRETE MONUMENT WITH 10" PVC COLLAR

MARK EXISTING VALUES AS PUBLISHED BY _____

MARK SET VALUES ESTABLISHED BY DENI ASSOCIATES, INC. DATE OCTOBER 1997

HORIZONTAL VALUES ORIGINATED ON ORDER "B" IOWA HIGH ACCURACY REFERENCE NETWORK (HARN) CONTROL ESTABLISHED BY THE NATIONAL GEODETIC SURVEY AND BASED ON THE NORTH AMERICAN DATUM OF 1983, 1996 ADJUSTMENT.

IOWA COORDINATE SYSTEM, NORTH ZONE SCALE FACTOR: 0.99997162

COORDINATES (US FEET) COORDINATES (METERS)

NORTHING (Y) 3860933.058 NORTHING (Y) 1176814.750

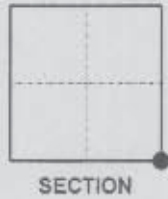
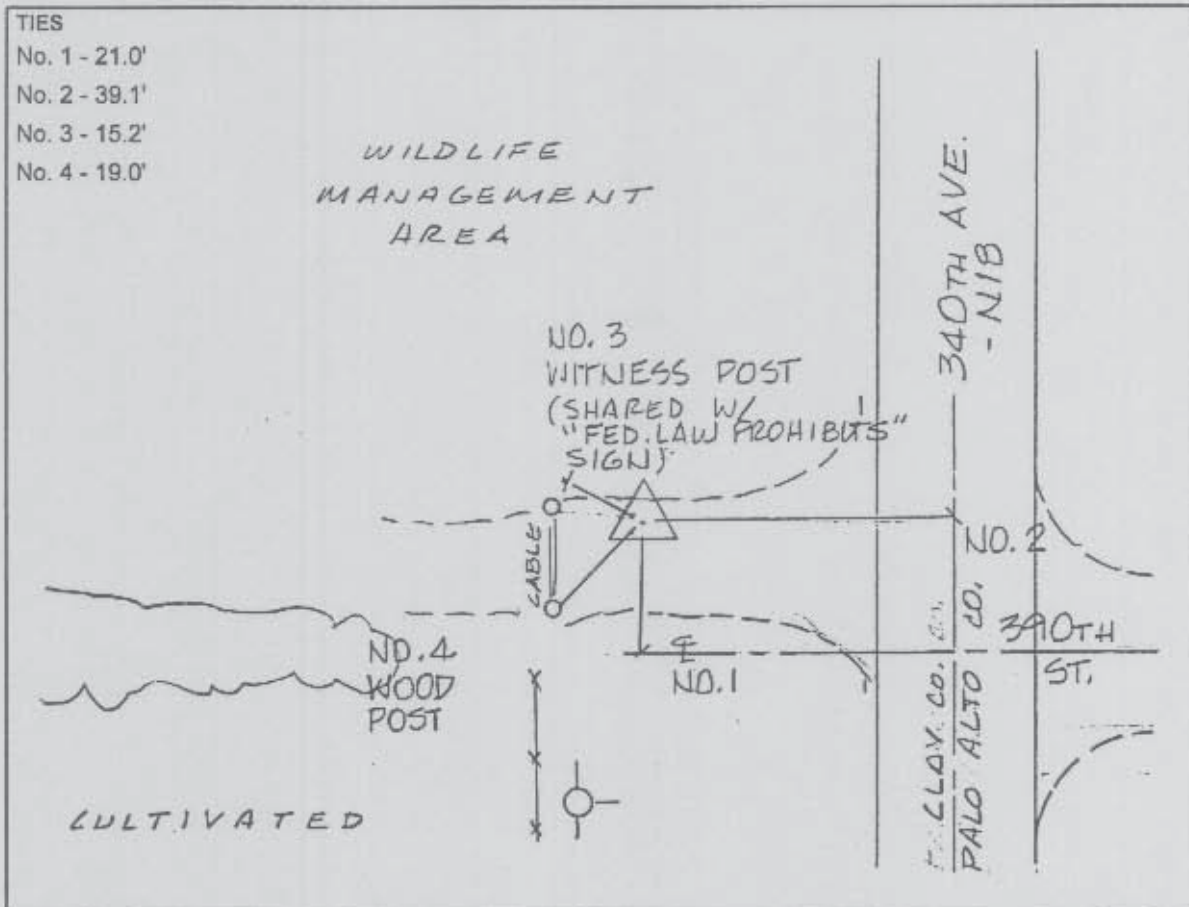
EASTING (X) 4543584.752 EASTING (X) 1384887.402

VERTICAL VALUES ORIGINATED ON VERTICAL CONTROL ESTABLISHED BY THE NATIONAL GEODETIC SURVEY AND/OR THE U.S. GEOLOGICAL SURVEY AND BASED ON THE NORTH AMERICAN VERTICAL DATUM OF 1988.

ELEVATION (US FEET) 1412.69 ELEVATION (METERS) 430.588

TIES

- No. 1 - 21.0'
- No. 2 - 39.1'
- No. 3 - 15.2'
- No. 4 - 19.0'



SKETCH
BY DSW
DENI 9709001