

GPS SURVEY MARK DESCRIPTION

GIS MAPPING BY:
THE SIDWELL COMPANY
WEST CHICAGO, ILLINOIS

THE OFFICE OF THE
COUNTY ENGINEER
CLAY COUNTY, IOWA

DESIGNATION 4 GJS RESET GPS No. 9797 COUNTY CLAY STATE IOWA
 LOCATED IN SECTION 8 TWP 97 N RGE 36 W USGS QUAD MAP _____ SPENCER
 TO REACH FROM THE INTERSECTION OF 280TH STREET / COUNTY ROAD B14 AND 230TH AVENUE; GO EAST
0.15 MILE TO MARK.

MARK STANDARD U.S.G.S. DISK IN CONCRETE, STAMPED "4 GJS 1964 RESET 1967"

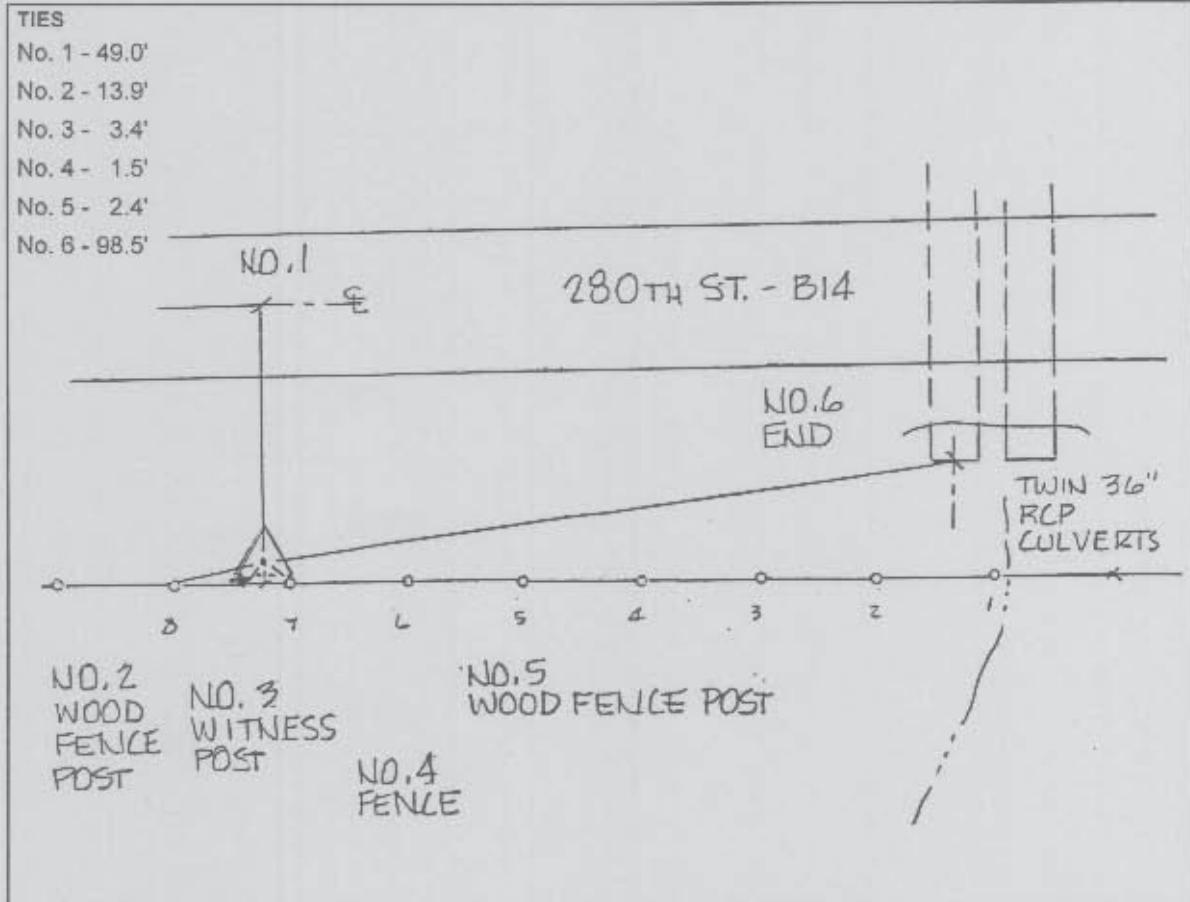
MARK EXISTING VALUES AS PUBLISHED BY _____
 MARK SET VALUES ESTABLISHED BY DENI ASSOCIATES, INC. DATE OCTOBER 1997

HORIZONTAL VALUES ORIGINATED ON ORDER "B" IOWA HIGH ACCURACY REFERENCE NETWORK (HARN) CONTROL ESTABLISHED BY THE NATIONAL GEODETIC SURVEY AND BASED ON THE NORTH AMERICAN DATUM OF 1983, 1996 ADJUSTMENT.

IOWA COORDINATE SYSTEM, NORTH ZONE	SCALE FACTOR: <u>0.99999551</u>
COORDINATES (US FEET)	COORDINATES (METERS)
NORTHING (Y) <u>3919708.160</u>	NORTHING (Y) <u>1194729.437</u>
EASTING (X) <u>4487224.849</u>	EASTING (X) <u>1367708.870</u>

VERTICAL VALUES ORIGINATED ON VERTICAL CONTROL ESTABLISHED BY THE NATIONAL GEODETIC SURVEY AND / OR THE U.S. GEOLOGICAL SURVEY AND BASED ON THE NORTH AMERICAN VERTICAL DATUM OF 1988.

ELEVATION (US FEET) <u>1424.13</u>	ELEVATION (METERS) <u>434.076</u>
------------------------------------	-----------------------------------



SKETCH
BY DSW
DENI 9709001