

# GPS SURVEY MARK DESCRIPTION

GIS MAPPING BY:  
THE SIDWELL COMPANY  
WEST CHICAGO, ILLINOIS

THE OFFICE OF THE  
COUNTY ENGINEER  
CLAY COUNTY, IOWA

DESIGNATION ET 15 HK GPS No. 9798 COUNTY CLAY STATE IOWA

LOCATED IN SECTION 5 TWP 97 N RGE 35 W USGS QUAD MAP \_\_\_\_\_ DICKENS

TO REACH FROM THE INTERSECTION OF 280TH STREET / COUNTY ROAD B14 AND 300TH AVENUE; GO WESTERLY  
0.4 MILE TO MARK.

MARK STANDARD U.S.G.S. DISK IN CONCRETE, STAMPED "ET 15 HK 1964 ELEV. 1388 FT. ABOVE SEA"

MARK EXISTING     VALUES AS PUBLISHED BY \_\_\_\_\_

MARK SET     VALUES ESTABLISHED BY DENI ASSOCIATES, INC. DATE OCTOBER 1997

HORIZONTAL VALUES ORIGINATED ON ORDER "B" IOWA HIGH ACCURACY REFERENCE NETWORK (HARN) CONTROL ESTABLISHED BY THE NATIONAL GEODETIC SURVEY AND BASED ON THE NORTH AMERICAN DATUM OF 1983, 1996 ADJUSTMENT.

IOWA COORDINATE SYSTEM, NORTH ZONE    SCALE FACTOR: 0.99999628

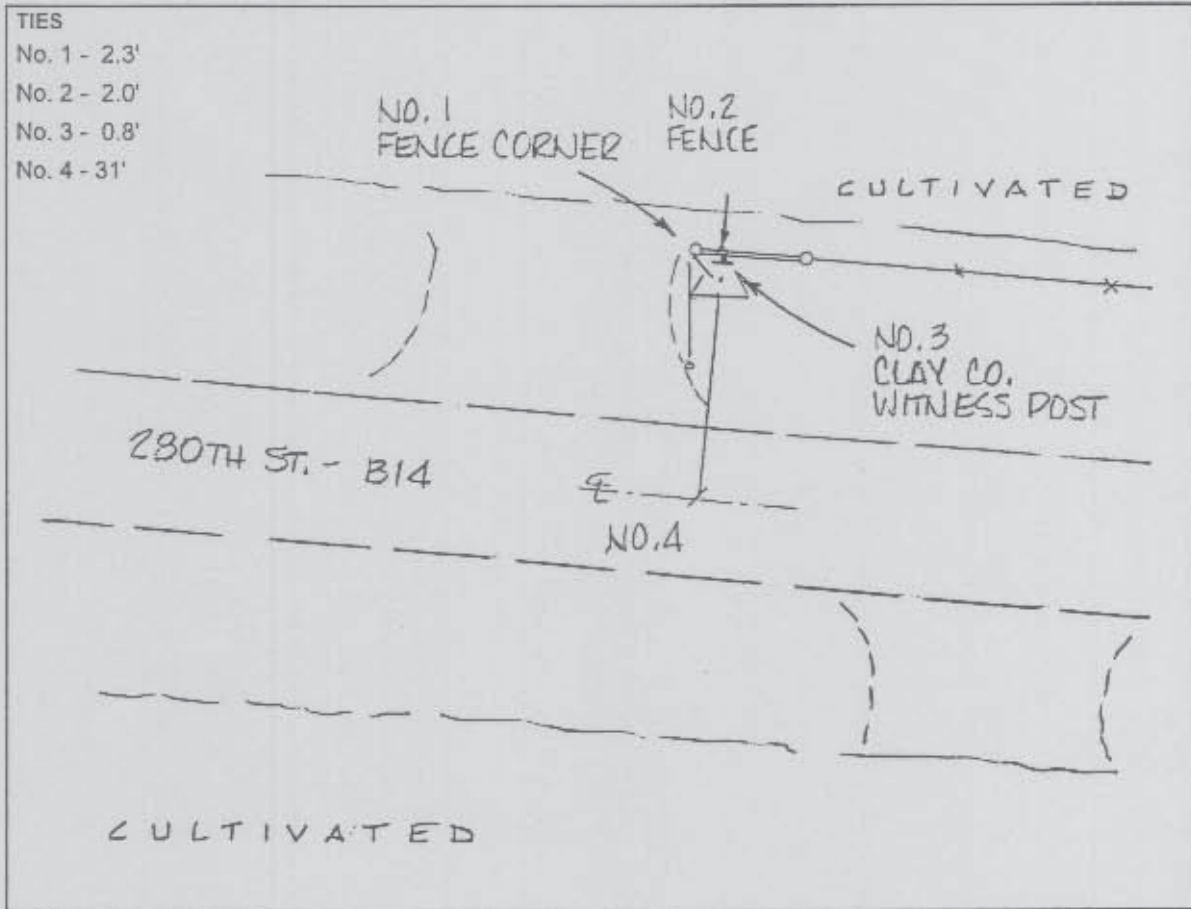
COORDINATES (US FEET)    COORDINATES (METERS)

NORTHING (Y) 3920678.660    NORTHING (Y) 1195025.246

EASTING (X) 4520924.580    EASTING (X) 1377980.568

VERTICAL VALUES ORIGINATED ON VERTICAL CONTROL ESTABLISHED BY THE NATIONAL GEODETIC SURVEY AND / OR THE U.S. GEOLOGICAL SURVEY AND BASED ON THE NORTH AMERICAN VERTICAL DATUM OF 1988.

ELEVATION (US FEET) 1387.92    ELEVATION (METERS) 423.039



SKETCH  
BY DSW  
DENI 9709001