

Clinton County, Iowa
Iowa South Zone (1402)
Horiz. Datum: **NAD83(NA2011)**
Vert. Datum: NAVD 1988
US Survey Feet
2013

Point Name: **1**

Designation: 2006-001 Clinton Co Monument (Set by Landmark Engr. in 2006)

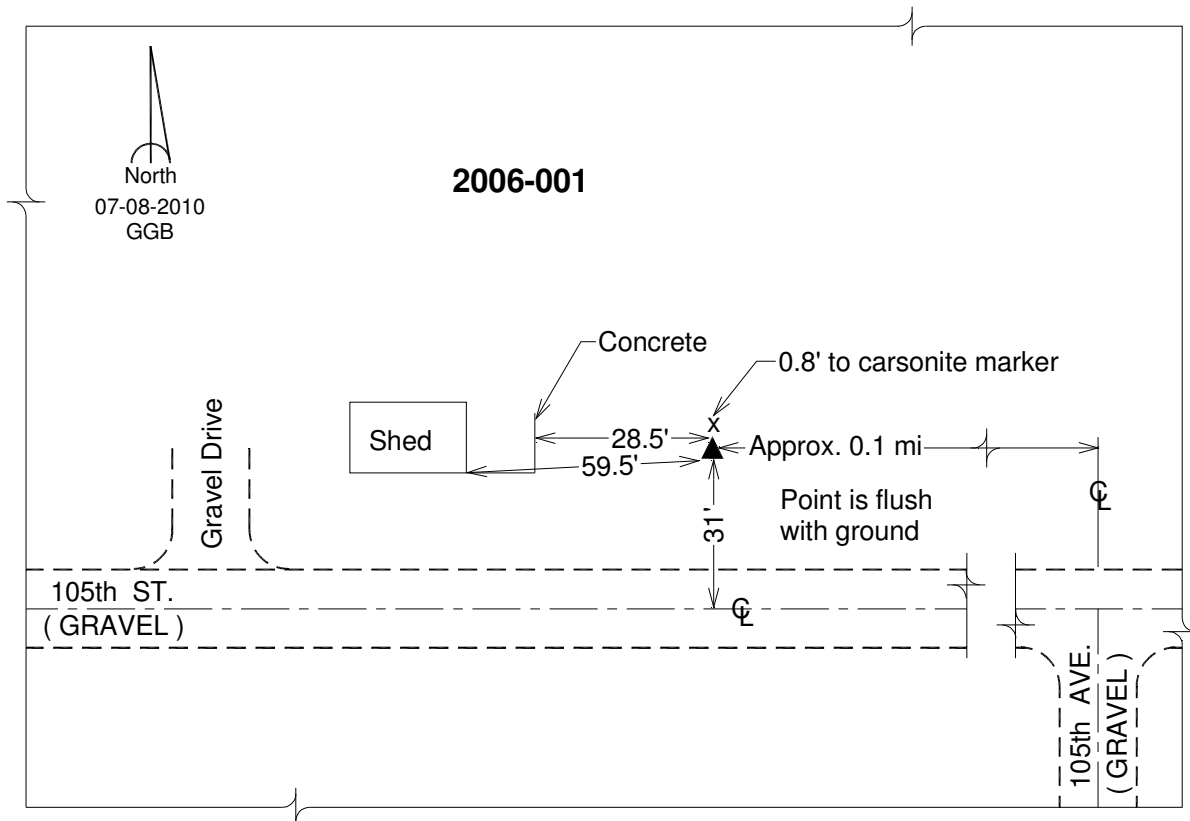
Northing: **748909.74sft** Easting: **2349206.85sft**

Orthometric Height: **844.98sft** Ellipsoid Height: **738.11sft** **Geoid12A**

Latitude: **N42°01'34.60605"** Longitude: **W90°53'27.94240"**

Mapping Angle: **1°43'07"** Combination Scale Factor: **1.000016969**

Monument Type: 3/4" x 7' aluminum rod monument encased in a PVC sleeve.



This document was prepared by DCI on 05-29-2013 for use by Clinton County, Iowa.