

Clinton County, Iowa
Iowa South Zone (1402)
Horiz. Datum: **NAD83(NA2011)**
Vert. Datum: NAVD 1988
US Survey Feet
2013

Point Name: **2**

Designation: 2006-002 Clinton Co Monument (Set by Landmark Engr. in 2006)

Northing: **749654.07sft** Easting: **2378893.69sft**

Orthometric Height: **842.37sft** Ellipsoid Height: **735.35sft** **Geoid12A**

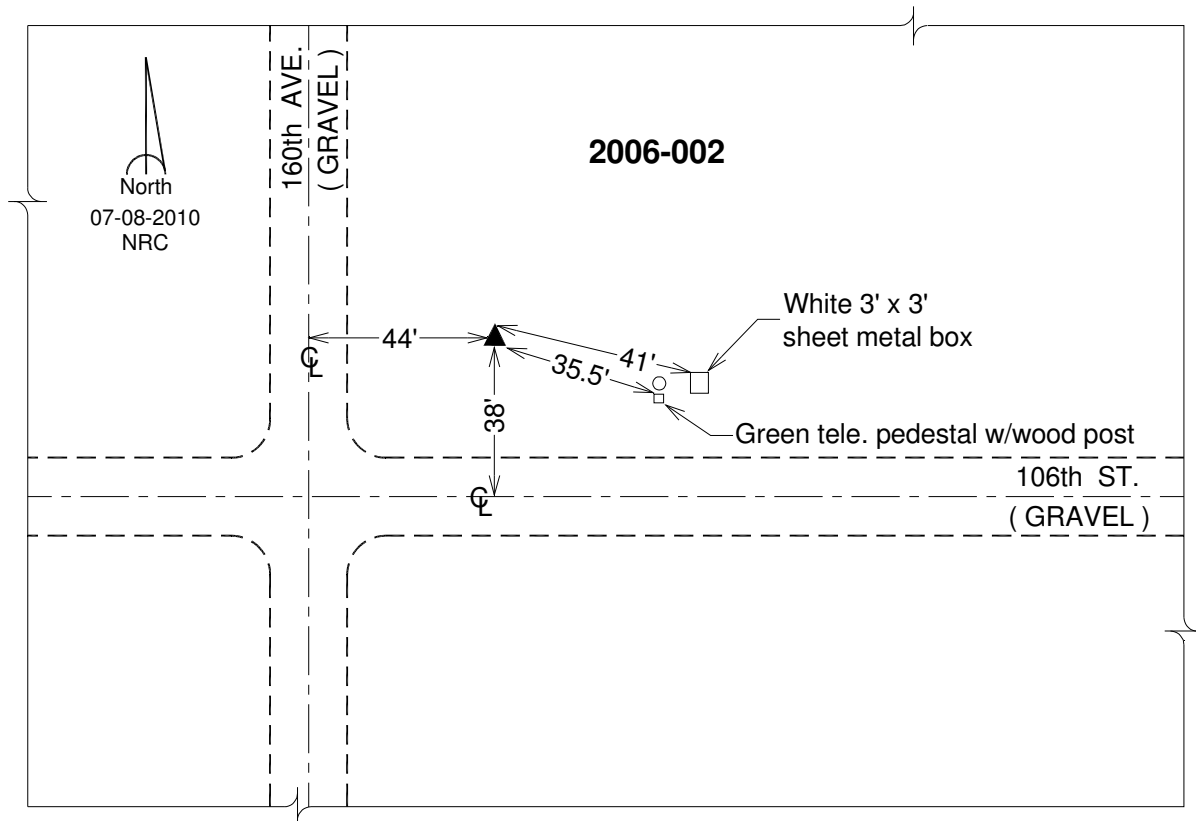
Latitude: **N42°01'32.97674"**

Longitude: **W90°46'54.50991"**

Mapping Angle: **1°47'26"**

Combination Scale Factor: **1.000016987**

Monument Type: 3/4" x 7' aluminum rod monument encased in a PVC sleeve.



This document was prepared by DCI on 05-29-2013 for use by Clinton County, Iowa.