

Clinton County, Iowa
 Iowa South Zone (1402)
 Horiz. Datum: **NAD83(NA2011)**
 Vert. Datum: NAVD 1988
 US Survey Feet
2013

Point Name: **3**

Designation: 2010-003 Clinton Co GPS Control Pt (Set by DCI in 2010)

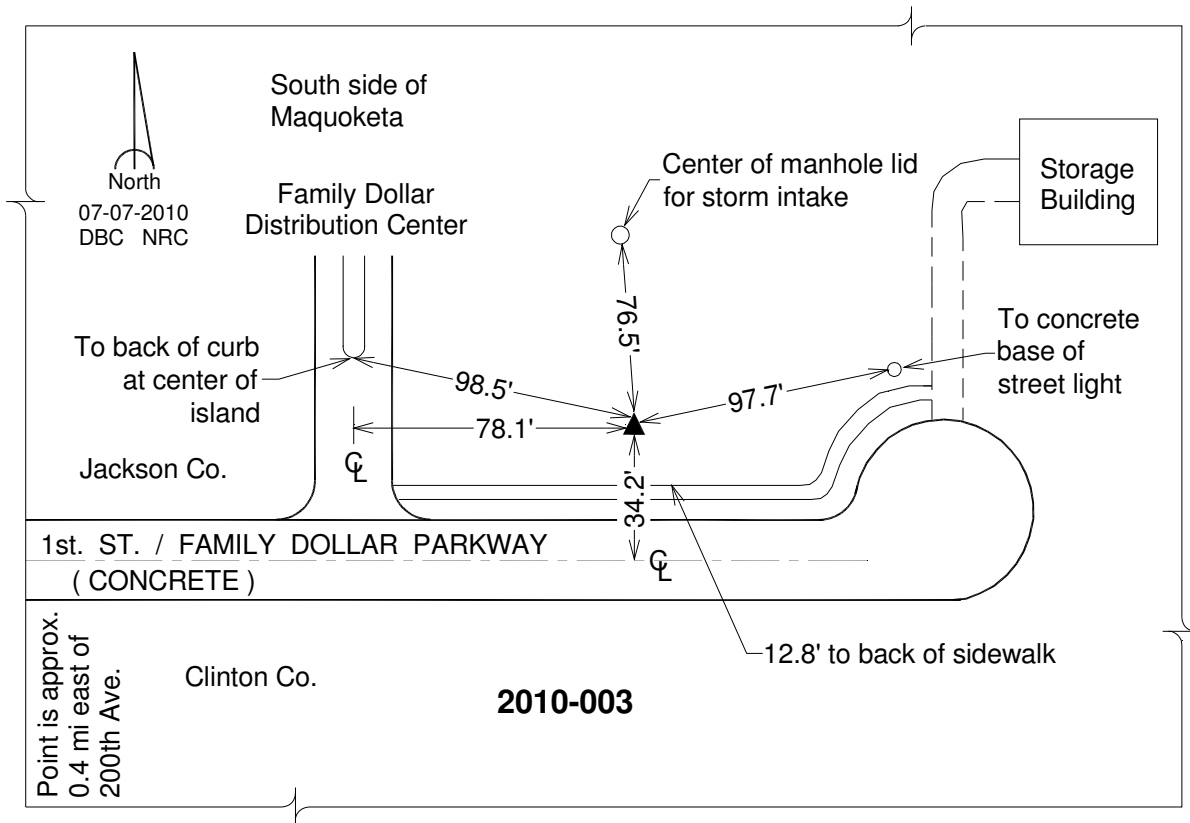
Northing: **753330.60sft** Easting: **2412728.03sft**

Orthometric Height: **710.24sft** Ellipsoid Height: **602.99sft** **Geoid12A**

Latitude: **N42°01'58.59353"** Longitude: **W90°39'24.89478"**

Mapping Angle: **1°52'22"** Combination Scale Factor: **1.000025103**

Monument Type: Berntsen 3/4" Top Security Rod Monument with a 2-1/2" dia. domed survey cap and permanent magnet encased in a white PVC pipe with a NGS style alum. access cover.



This document was prepared by DCI on 05-29-2013 for use by Clinton County, Iowa.