

Clinton County, Iowa
Iowa South Zone (1402)
Horiz. Datum: **NAD83(NA2011)**
Vert. Datum: NAVD 1988
US Survey Feet
2013

Point Name: **4**

Designation: 2006-004 Clinton Co Monument (Set by Landmark Engr. in 2006)

Northing: **754131.96sft** Easting: **2439470.87sft**

Orthometric Height: **828.59sft** Ellipsoid Height: **721.12sft** **Geoid12A**

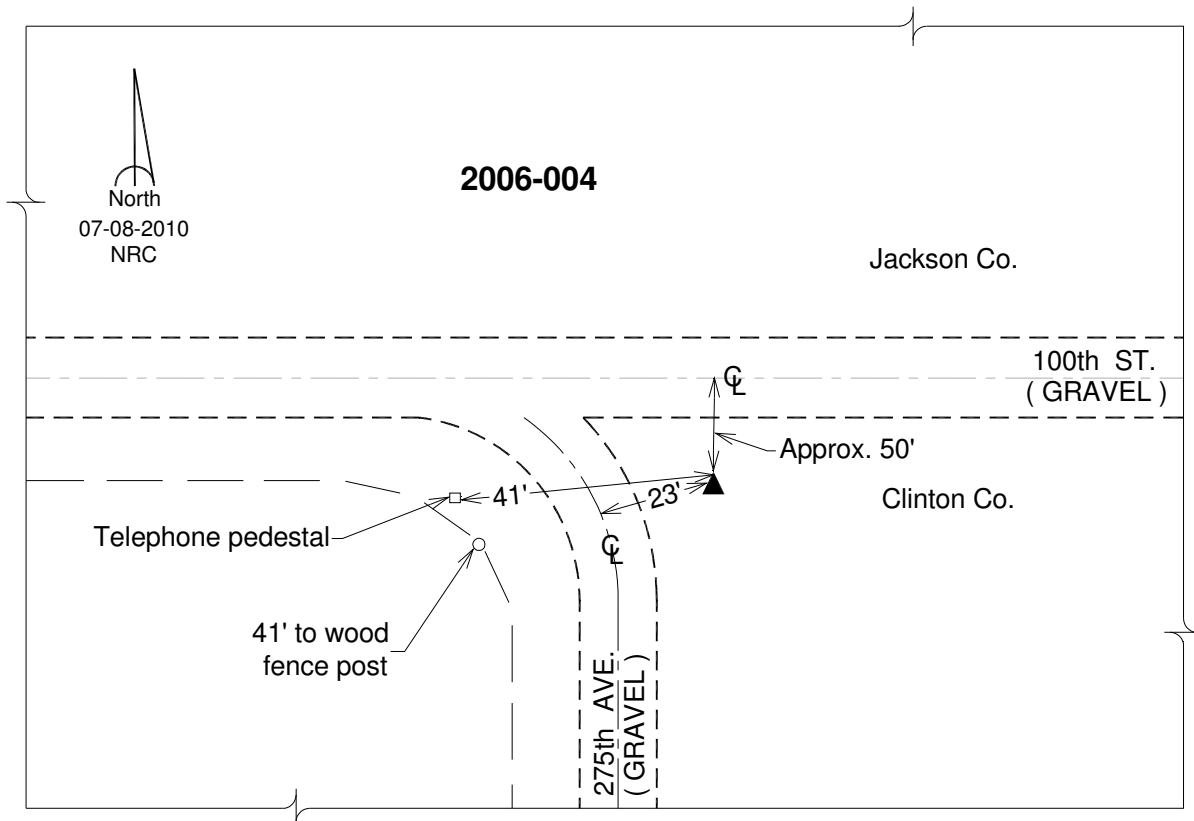
Latitude: **N42°01'57.72271"**

Longitude: **W90°33'30.39011"**

Mapping Angle: **1°56'15"**

Combination Scale Factor: **1.000019405**

Monument Type: 3/4" x 7' aluminum rod monument encased in a PVC sleeve.



This document was prepared by DCI on 05-29-2013 for use by Clinton County, Iowa.