

Clinton County, Iowa
 Iowa South Zone (1402)
 Horiz. Datum: **NAD83(NA2011)**
 Vert. Datum: NAVD 1988
 US Survey Feet
2013

Point Name: **5**

Designation: 2006-005 Clinton Co Monument (Set by Landmark Engr. in 2006)

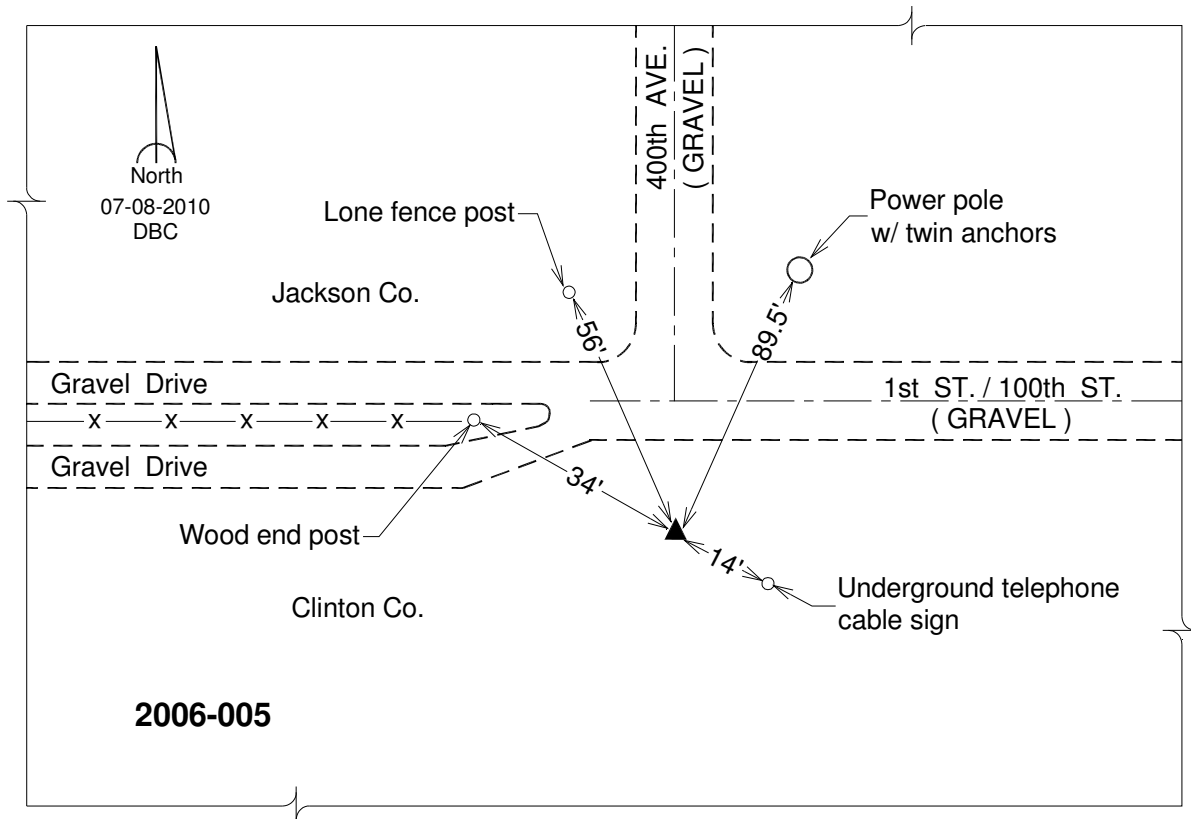
Northing: **755544.31**sft Easting: **2473638.88**sft

Orthometric Height: **662.21**sft Ellipsoid Height: **554.24**sft **Geoid12A**

Latitude: **N42°02'00.00993"** Longitude: **W90°25'57.28032"**

Mapping Angle: **2°01'14"** Combination Scale Factor: **1.000027530**

Monument Type: 3/4" x 7' aluminum rod monument encased in a PVC sleeve.



This document was prepared by DCI on 05-29-2013 for use by Clinton County, Iowa.