

Clinton County, Iowa
 Iowa South Zone (1402)
 Horiz. Datum: **NAD83(NA2011)**
 Vert. Datum: NAVD 1988
 US Survey Feet
2013

Point Name: **6**

Designation: 2010-006 Clinton Co GPS Control Pt (Set by DCI in 2010)

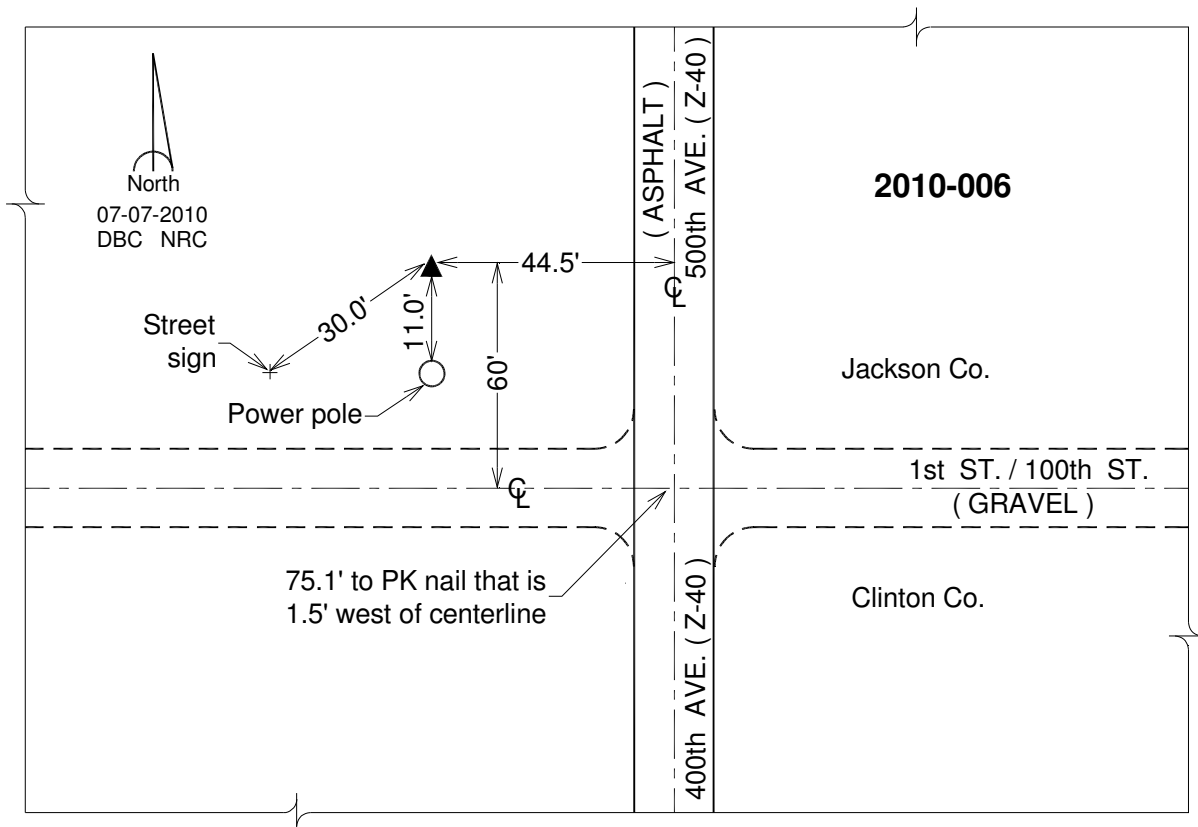
Northing: **756819.58sft** Easting: **2505309.72sft**

Orthometric Height: **833.69sft** Ellipsoid Height: **725.44sft** **Geoid12A**

Latitude: **N42°02'01.35924"** Longitude: **W90°18'57.29527"**

Mapping Angle: **2°05'50"** Combination Scale Factor: **1.000019456**

Monument Type: Berntsen 3/4" Top Security Rod Monument with a 2-1/2" dia. domed survey cap and permanent magnet encased in a white PVC pipe with a NGS style alum. access cover.



This document was prepared by DCI on 05-29-2013 for use by Clinton County, Iowa.