

Clinton County, Iowa
Iowa South Zone (1402)
Horiz. Datum: **NAD83(NA2011)**
Vert. Datum: NAVD 1988
US Survey Feet
2013

Point Name: **7**

Designation: 2006-007 Clinton Co Monument (Set by Landmark Engr. in 2006)

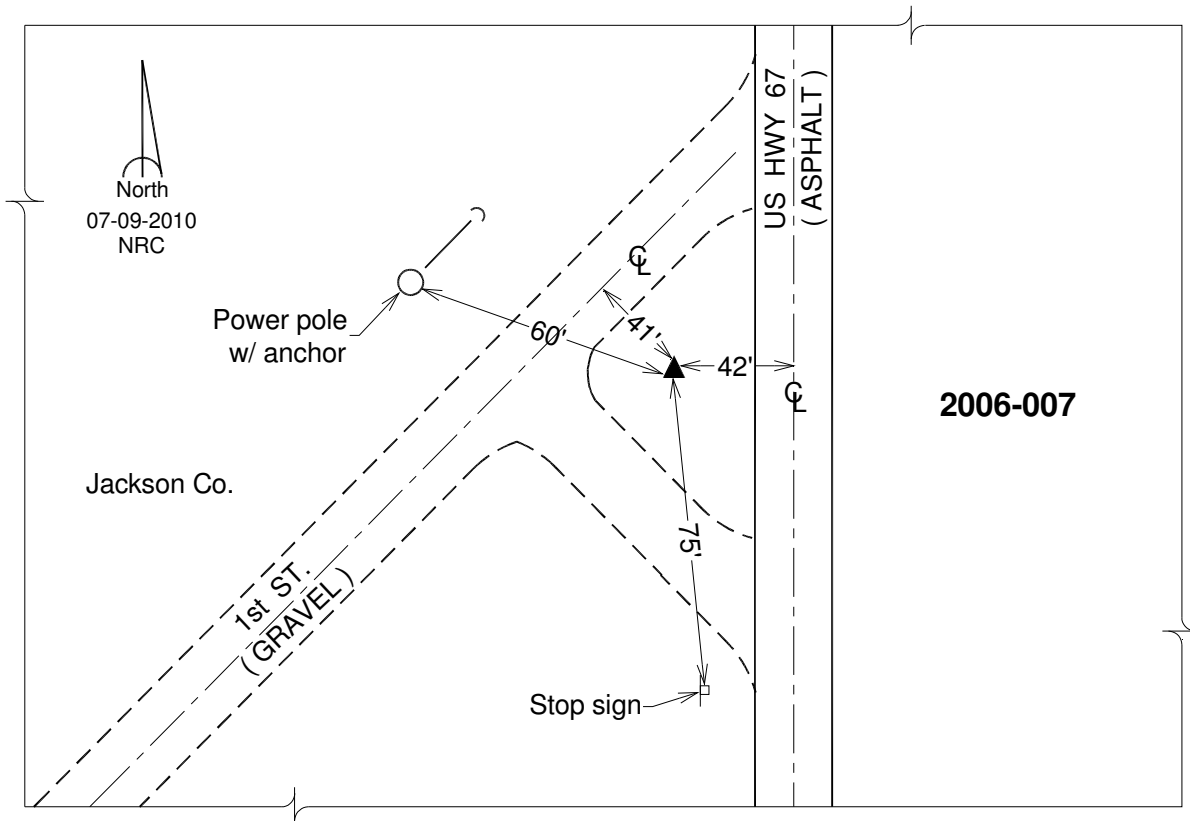
Northing: **759152.71**sft Easting: **2538491.40**sft

Orthometric Height: **663.72**sft Ellipsoid Height: **555.15**sft **Geoid12A**

Latitude: **N42°02'12.16424"** Longitude: **W90°11'36.76859"**

Mapping Angle: **2°10'41"** Combination Scale Factor: **1.000028346**

Monument Type: 3/4" x 7' aluminum rod monument encased in a PVC sleeve.



This document was prepared by DCI on 05-29-2013 for use by Clinton County, Iowa.