

**Clinton County, Iowa**  
 Iowa South Zone (1402)  
 Horiz. Datum: **NAD83(NA2011)**  
 Vert. Datum: NAVD 1988  
 US Survey Feet  
**2013**

Point Name: **8**

**Designation:** JONES CO. GPS CONTROL PT. 2004-068 (Set by DCI in 2004)

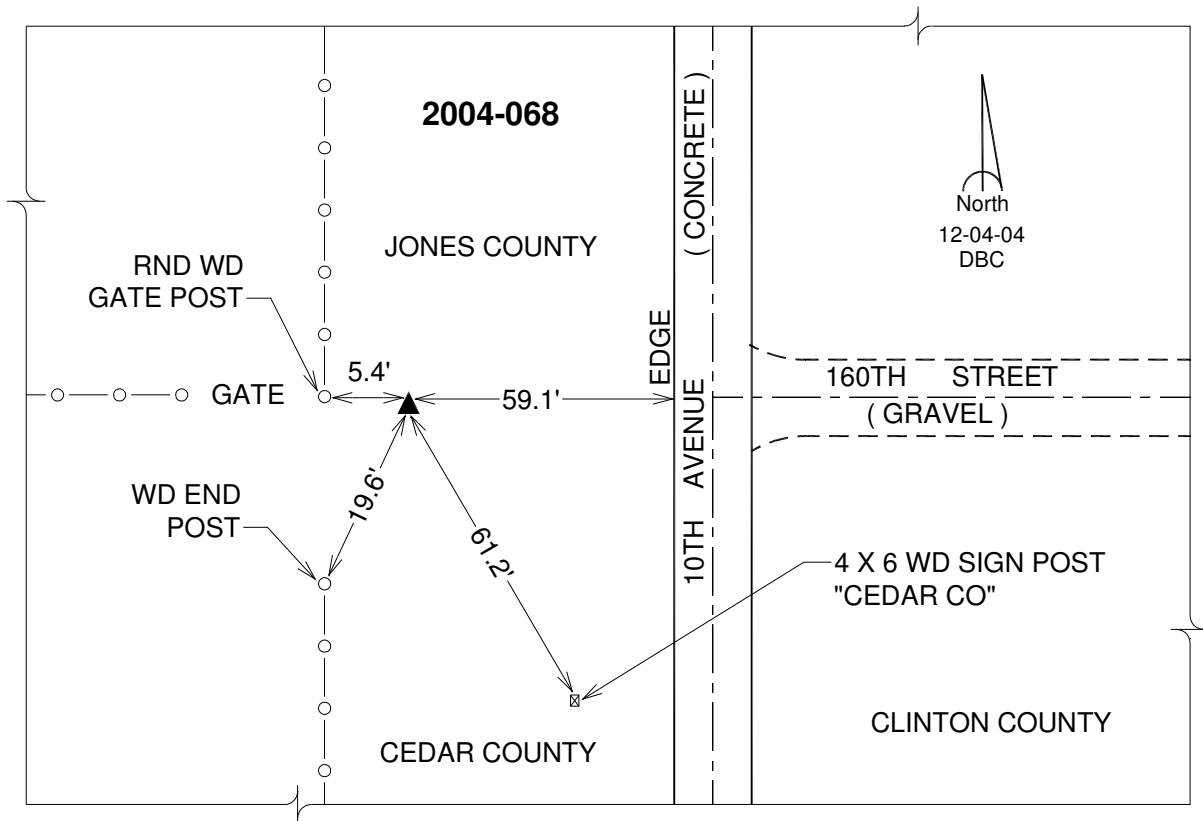
Northing: **719688.63sft**    Easting: **2347998.39sft**

Orthometric Height: **720.45sft**    Ellipsoid Height: **613.44sft**    **Geoid12A**

Latitude: **N41°56'46.43196"**    Longitude: **W90°53'55.52187"**

Mapping Angle: **1°42'48"**    Combination Scale Factor: **1.000003721**

**Monument Type:** Berntsen Top Security Rod Monument with a 2-1/2" dia. domed cap and a permanent magnet encased in a 5" dia. PVC pipe with a NGS style aluminum access cover.



*This document was prepared by DCI on 05-29-2013 for use by Clinton County, Iowa.*