

Clinton County, Iowa
Iowa South Zone (1402)
Horiz. Datum: **NAD83(NA2011)**
Vert. Datum: NAVD 1988
US Survey Feet
2013

Point Name: **9**

Designation: 2006-009 Clinton Co Monument (Set by Landmark Engr. in 2006)

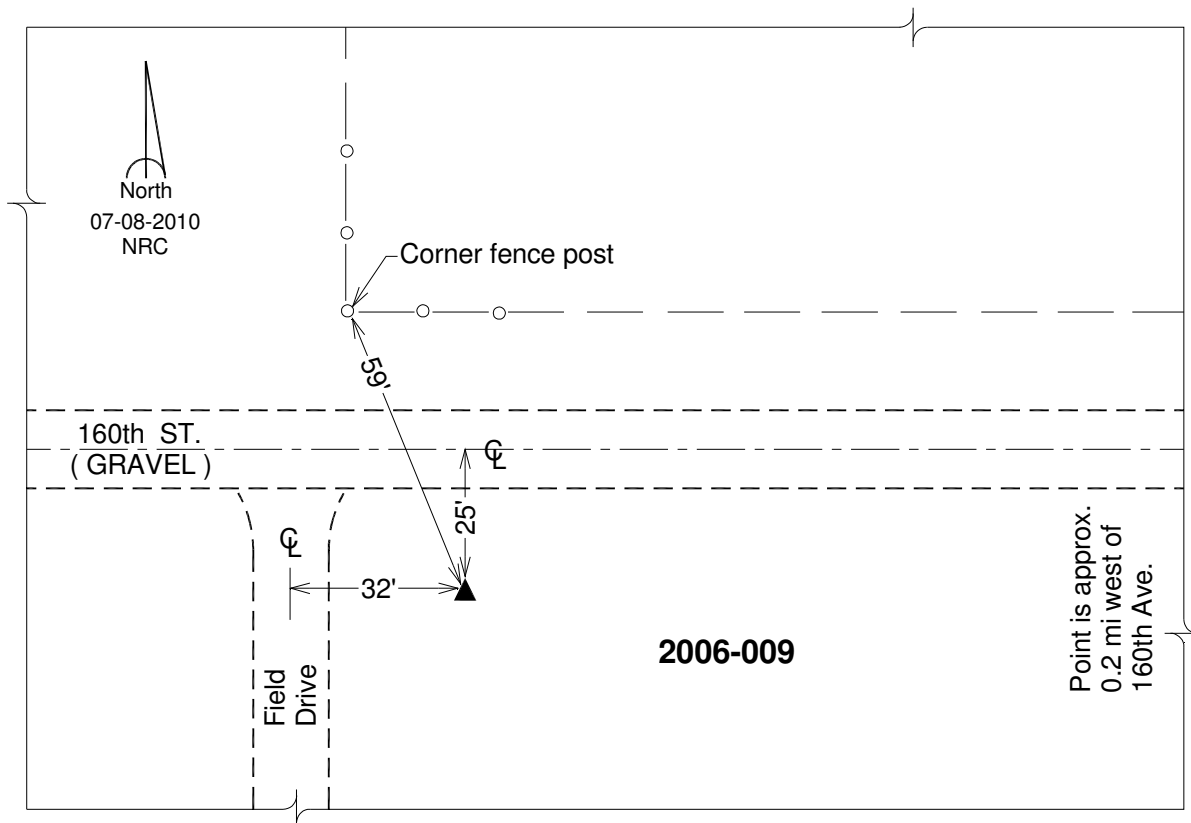
Northing: **720338.73sft** Easting: **2378566.87sft**

Orthometric Height: **722.66sft** Ellipsoid Height: **615.54sft** **Geoid12A**

Latitude: **N41°56'43.62683"** Longitude: **W90°47'10.95257"**

Mapping Angle: **1°47'15"** Combination Scale Factor: **1.000003443**

Monument Type: 3/4" x 7' aluminum rod monument encased in a PVC sleeve.



This document was prepared by DCI on 05-29-2013 for use by Clinton County, Iowa.