

Clinton County, Iowa
Iowa South Zone (1402)
Horiz. Datum: **NAD83(NA2011)**
Vert. Datum: NAVD 1988
US Survey Feet
2013

Point Name: **10**

Designation: 2006-010 Clinton Co Monument (Set by Landmark Engr. in 2006)

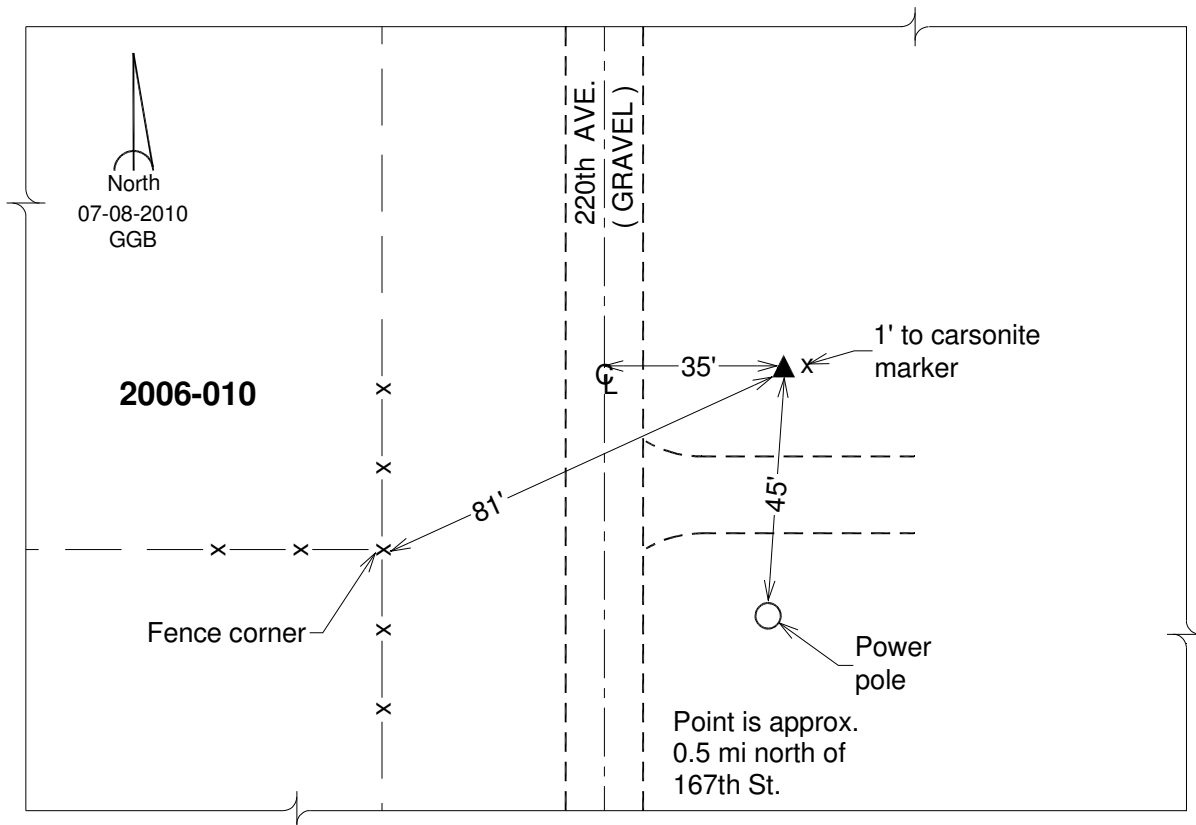
Northing: **720049.14sft** Easting: **2411709.22sft**

Orthometric Height: **822.11sft** Ellipsoid Height: **714.85sft** **Geoid12A**

Latitude: **N41°56'30.32618"** Longitude: **W90°39'52.75910"**

Mapping Angle: **1°52'04"** Combination Scale Factor: **0.999997867**

Monument Type: 3/4" x 7' aluminum rod monument encased in a PVC sleeve.



This document was prepared by DCI on 05-29-2013 for use by Clinton County, Iowa.