

**Clinton County, Iowa**  
 Iowa South Zone (1402)  
 Horiz. Datum: **NAD83(NA2011)**  
 Vert. Datum: NAVD 1988  
 US Survey Feet  
**2013**

Point Name: **11**

**Designation:** 2010-011 Clinton Co GPS Control Pt (Set by DCI in 2010)

Northing: **722665.24sft** Easting: **2443360.55sft**

Orthometric Height: **789.98sft** Ellipsoid Height: **682.43sft** **Geoid12A**

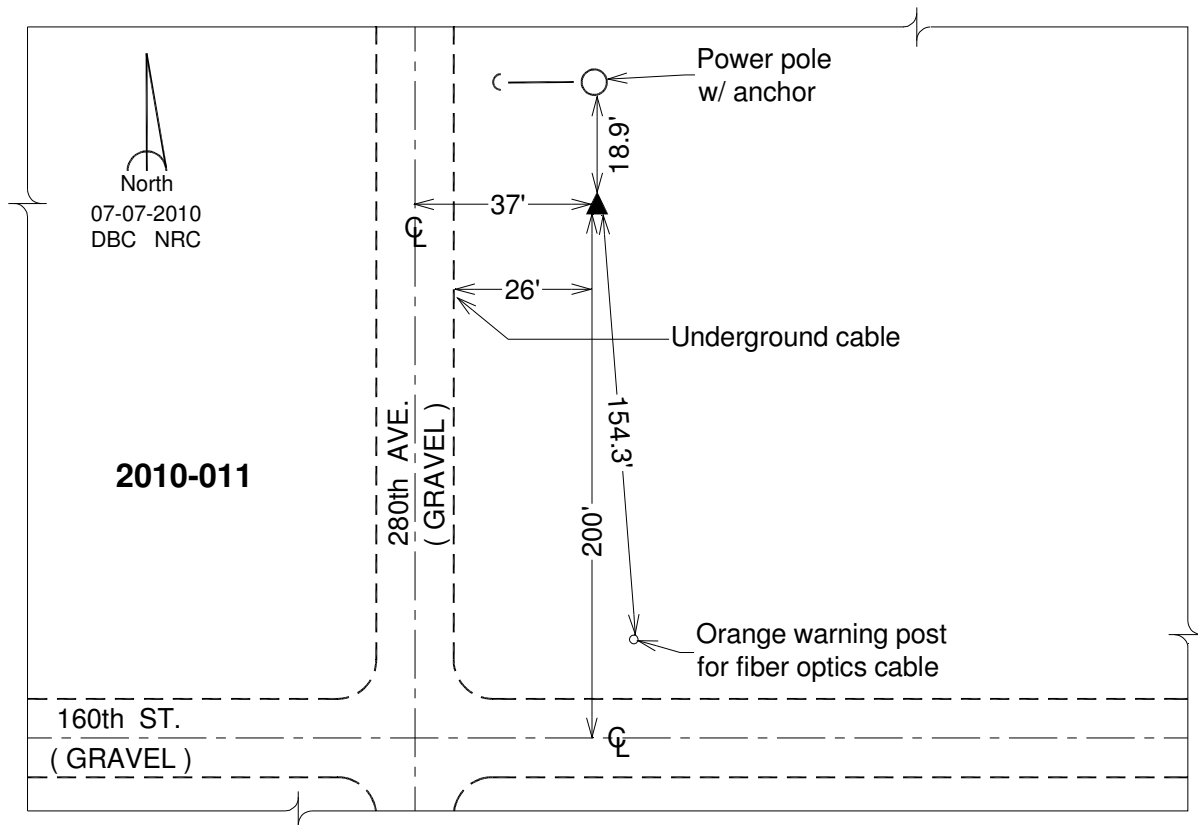
Latitude: **N41°56'45.75575"**

Longitude: **W90°32'53.02786"**

Mapping Angle: **1°56'40"**

Combination Scale Factor: **1.000000386**

**Monument Type:** Berntsen 3/4" Top Security Rod Monument with a 2-1/2" dia. domed survey cap and permanent magnet encased in a white PVC pipe with a NGS style alum. access cover.



*This document was prepared by DCI on 05-29-2013 for use by Clinton County, Iowa.*