

Clinton County, Iowa
Iowa South Zone (1402)
Horiz. Datum: **NAD83(NA2011)**
Vert. Datum: NAVD 1988
US Survey Feet
2013

Point Name: **12**

Designation: 2006-012 Clinton Co Monument (Set by Landmark Engr. in 2006)

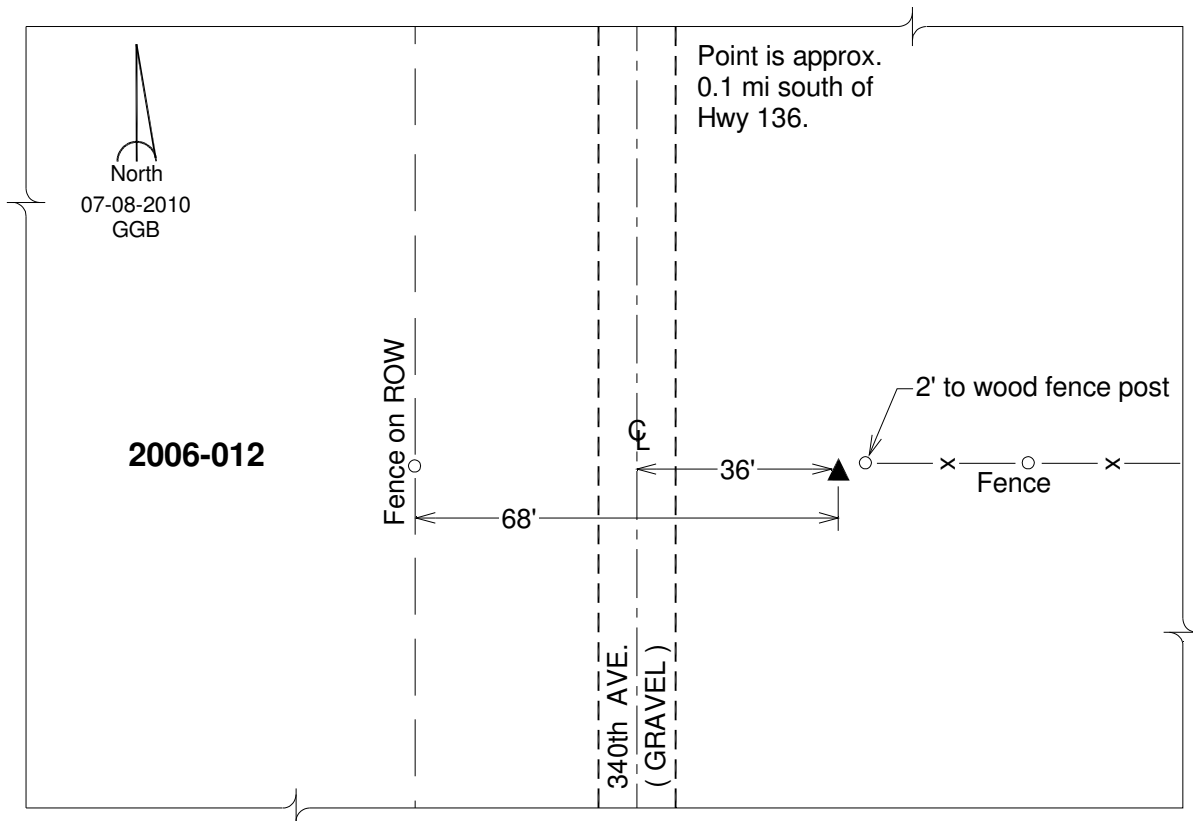
Northing: **729060.32sft** Easting: **2474830.18sft**

Orthometric Height: **744.62sft** Ellipsoid Height: **636.63sft** **Geoid12A**

Latitude: **N41°57'38.13653"** Longitude: **W90°25'53.88132"**

Mapping Angle: **2°01'16"** Combination Scale Factor: **1.000005914**

Monument Type: 3/4" x 7' aluminum rod monument encased in a PVC sleeve.



This document was prepared by DCI on 05-29-2013 for use by Clinton County, Iowa.