

Clinton County, Iowa
Iowa South Zone (1402)
Horiz. Datum: **NAD83(NA2011)**
Vert. Datum: NAVD 1988
US Survey Feet
2013

Point Name: **13**

Designation: 2006-013 Clinton Co Monument (Set by Landmark Engr. in 2006)

Northing: **724867.57**sft Easting: **2506693.89**sft

Orthometric Height: **788.25**sft Ellipsoid Height: **679.98**sft **Geoid12A**

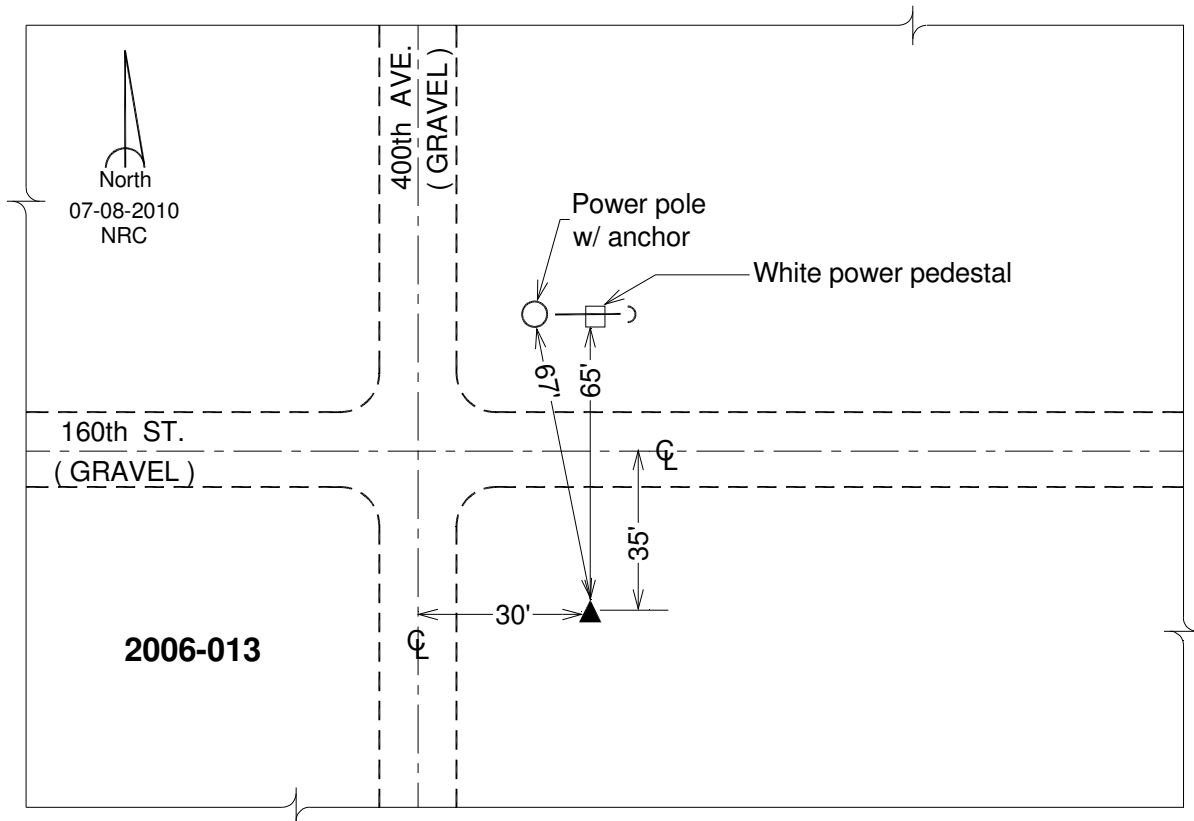
Latitude: **N41°56'45.43258"**

Longitude: **W90°18'54.46513"**

Mapping Angle: **2°05'52"**

Combination Scale Factor: **1.000000483**

Monument Type: 3/4" x 7' aluminum rod monument encased in a PVC sleeve.



This document was prepared by DCI on 05-29-2013 for use by Clinton County, Iowa.