

Clinton County, Iowa
 Iowa South Zone (1402)
 Horiz. Datum: **NAD83(NA2011)**
 Vert. Datum: NAVD 1988
 US Survey Feet
2013

Point Name: **14**

Designation: 2006-014 Clinton Co Monument (Set by Landmark Engr. in 2006)

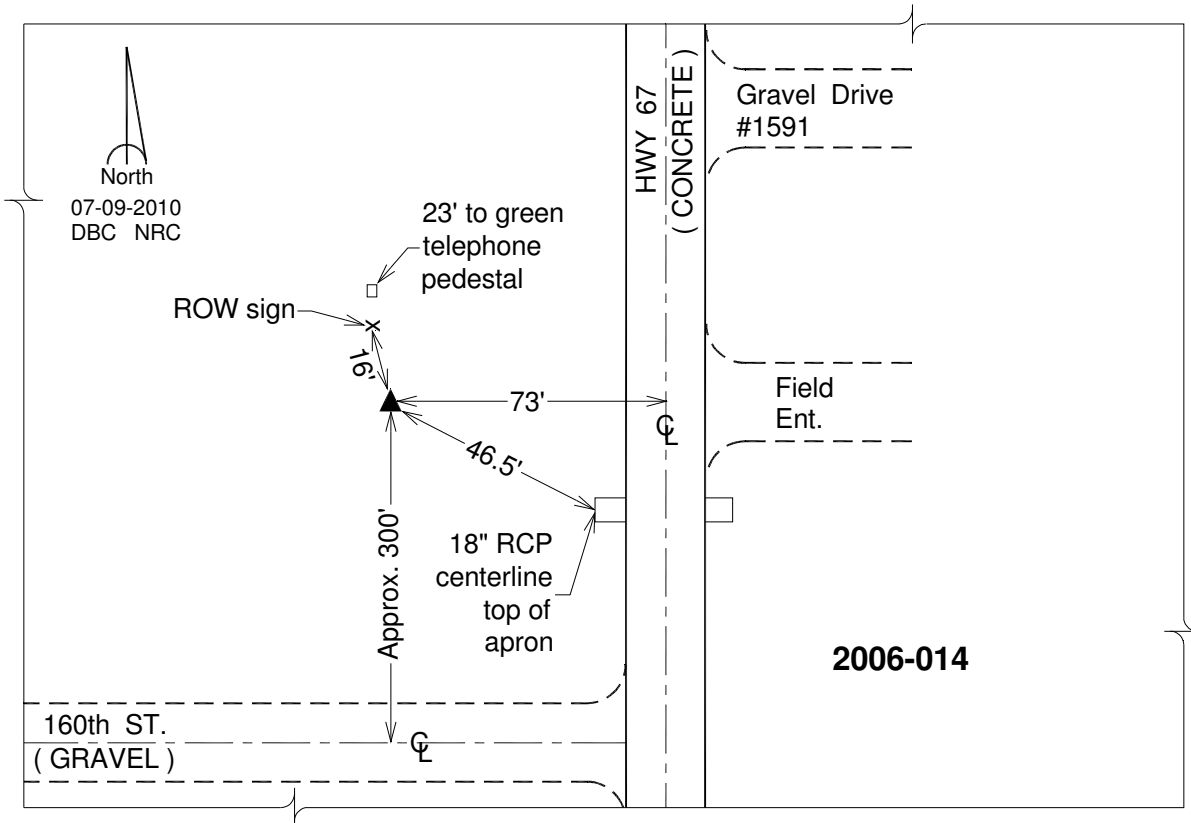
Northing: **726452.85sft** Easting: **2538209.60sft**

Orthometric Height: **684.14sft** Ellipsoid Height: **575.56sft** **Geoid12A**

Latitude: **N41°56'49.47780"** Longitude: **W90°11'56.93928"**

Mapping Angle: **2°10'27"** Combination Scale Factor: **1.000005721**

Monument Type: 3/4" x 7' aluminum rod monument encased in a PVC sleeve.



This document was prepared by DCI on 05-29-2013 for use by Clinton County, Iowa.