

Clinton County, Iowa
Iowa South Zone (1402)
Horiz. Datum: **NAD83(NA2011)**
Vert. Datum: NAVD 1988
US Survey Feet
2013

Point Name: **15**

Designation: 2006-015 Clinton Co Monument (Set by Landmark Engr. in 2006)

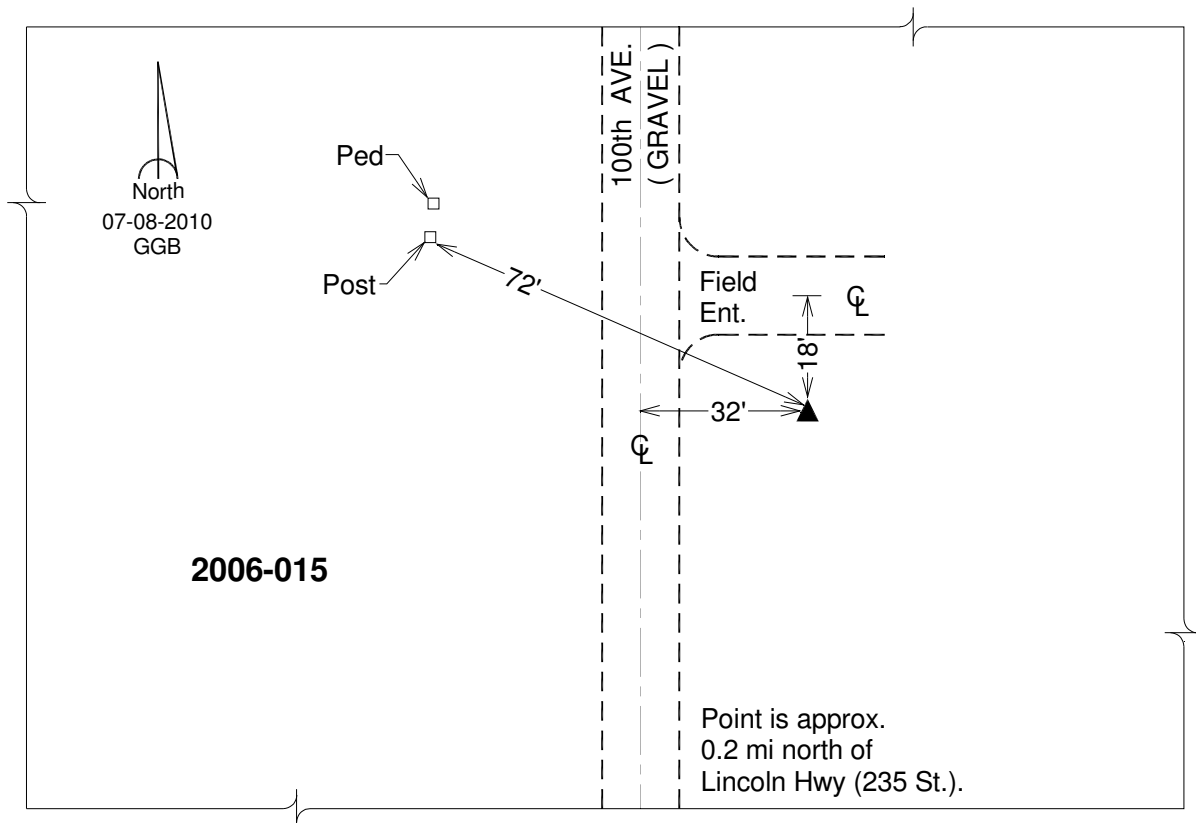
Northing: **686501.41sft** Easting: **2349152.29sft**

Orthometric Height: **727.48sft** Ellipsoid Height: **620.37sft** **Geoid12A**

Latitude: **N41°51'18.38627"** Longitude: **W90°53'53.39367"**

Mapping Angle: **1°42'50"** Combination Scale Factor: **0.999983932**

Monument Type: 3/4" x 7' aluminum rod monument encased in a PVC sleeve.



This document was prepared by DCI on 05-29-2013 for use by Clinton County, Iowa.