

Clinton County, Iowa
Iowa South Zone (1402)
Horiz. Datum: **NAD83(NA2011)**
Vert. Datum: NAVD 1988
US Survey Feet
2013

Point Name: **16**

Designation: 2006-016 Clinton Co Monument (Set by Landmark Engr. in 2006)

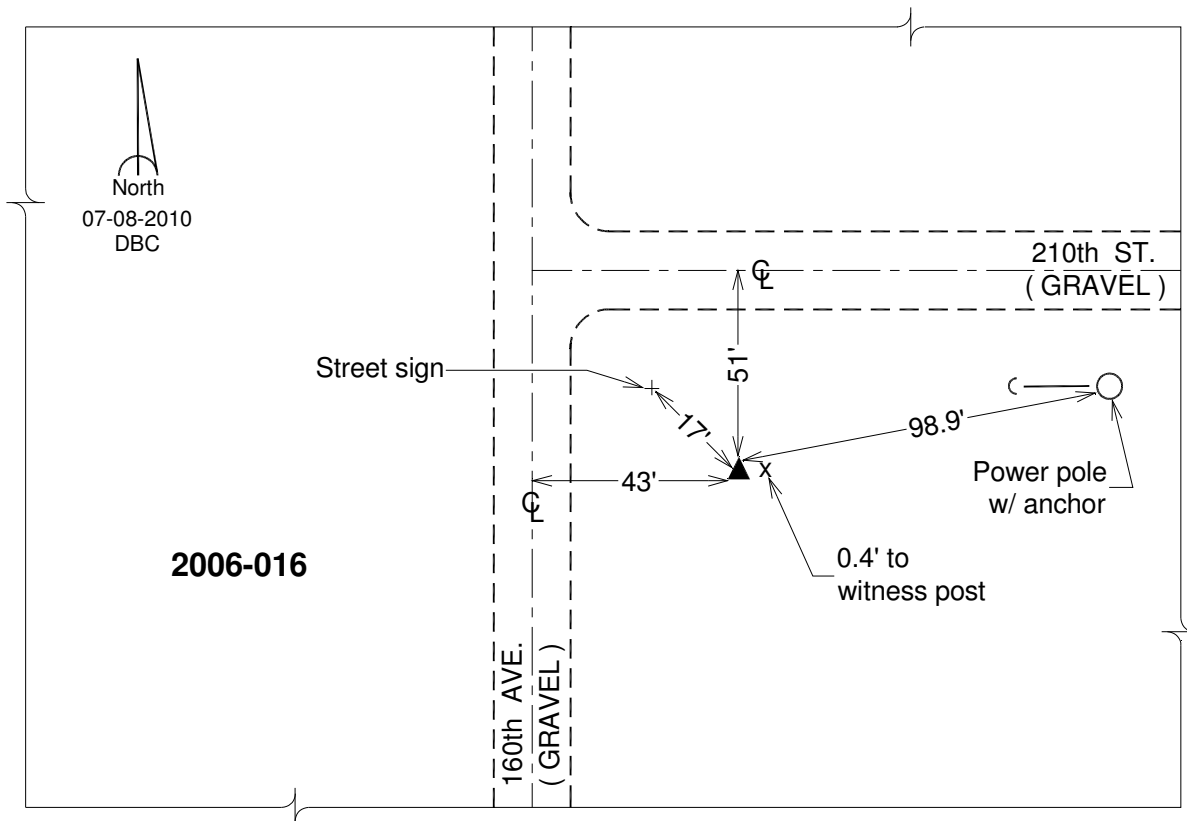
Northing: **693845.38**sft Easting: **2380730.91**sft

Orthometric Height: **694.54**sft Ellipsoid Height: **587.36**sft **Geoid12A**

Latitude: **N41°52'21.36406"** Longitude: **W90°46'53.28595"**

Mapping Angle: **1°47'27"** Combination Scale Factor: **0.999989045**

Monument Type: 3/4" x 7' aluminum rod monument encased in a PVC sleeve.



This document was prepared by DCI on 05-29-2013 for use by Clinton County, Iowa.