

**Clinton County, Iowa**  
Iowa South Zone (1402)  
Horiz. Datum: **NAD83(NA2011)**  
Vert. Datum: NAVD 1988  
US Survey Feet  
**2013**

Point Name: **17**

**Designation:** 2006-017 Clinton Co Monument (Set by Landmark Engr. in 2006)

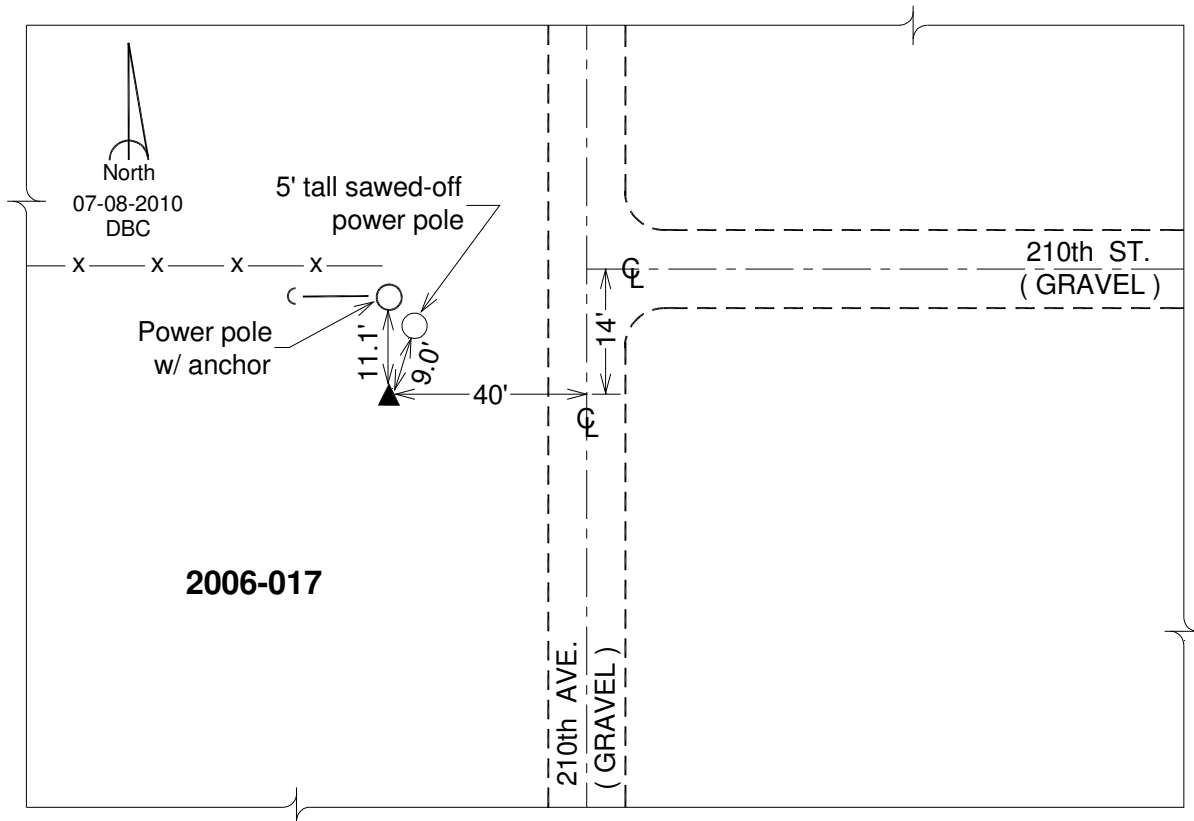
Northing: **694704.68**sft    Easting: **2407039.21**sft

Orthometric Height: **761.74**sft    Ellipsoid Height: **654.46**sft    **Geoid12A**

Latitude: **N41°52'21.58303"**                      Longitude: **W90°41'05.36995"**

Mapping Angle: **1°51'16"**                      Combination Scale Factor: **0.999985856**

**Monument Type:** 3/4" x 7' aluminum rod monument encased in a PVC sleeve.



*This document was prepared by DCI on 05-29-2013 for use by Clinton County, Iowa.*