

**Clinton County, Iowa**  
 Iowa South Zone (1402)  
 Horiz. Datum: **NAD83(NA2011)**  
 Vert. Datum: NAVD 1988  
 US Survey Feet  
**2013**

Point Name: **18**

**Designation:** 2006-018 Clinton Co Monument (Set by Landmark Engr. in 2006)

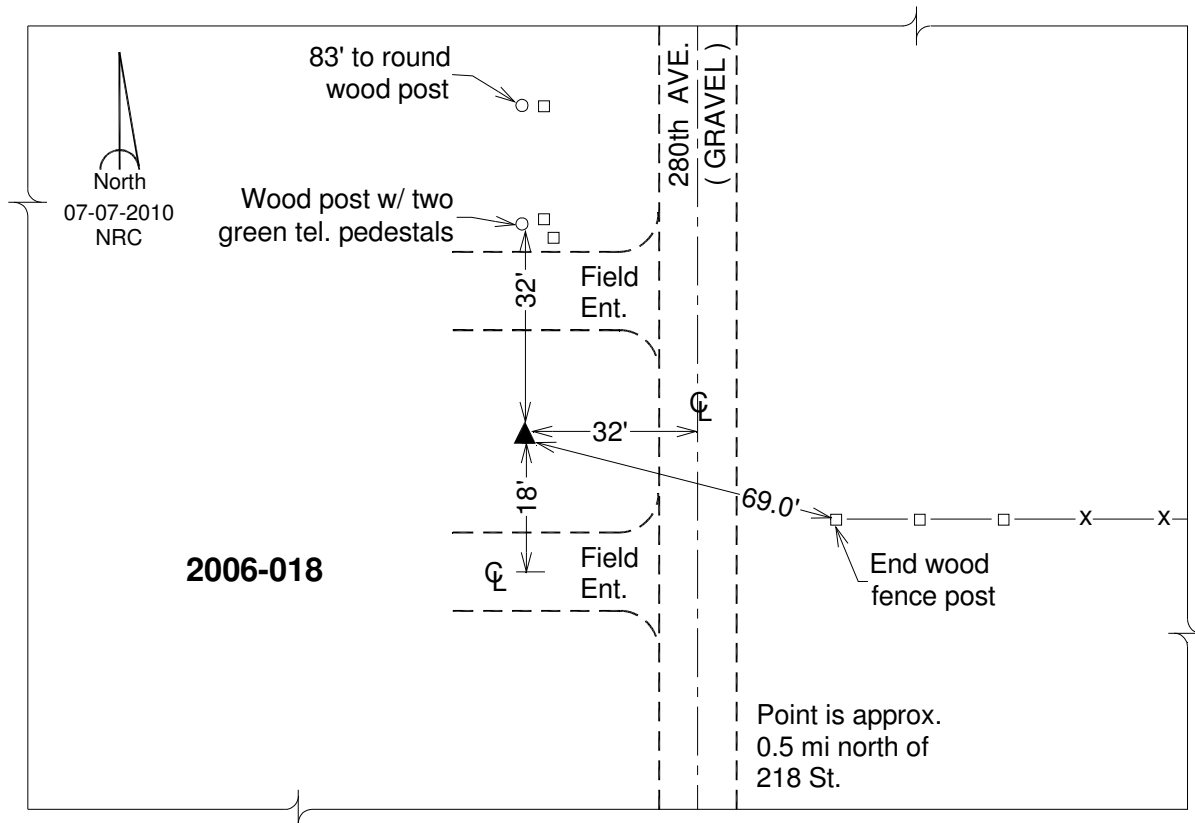
Northing: **690754.42sft**    Easting: **2444267.52sft**

Orthometric Height: **693.10sft**    Ellipsoid Height: **585.48sft**    **Geoid12A**

Latitude: **N41°51'30.39136"**    Longitude: **W90°32'55.35765"**

Mapping Angle: **1°56'38"**    Combination Scale Factor: **0.999986264**

**Monument Type:** 3/4" x 7' aluminum rod monument encased in a PVC sleeve.



*This document was prepared by DCI on 05-29-2013 for use by Clinton County, Iowa.*