

Clinton County, Iowa
Iowa South Zone (1402)
Horiz. Datum: **NAD83(NA2011)**
Vert. Datum: NAVD 1988
US Survey Feet
2013

Point Name: **19**

Designation: 2010-019 Clinton Co GPS Control Pt (Set by DCI in 2010)

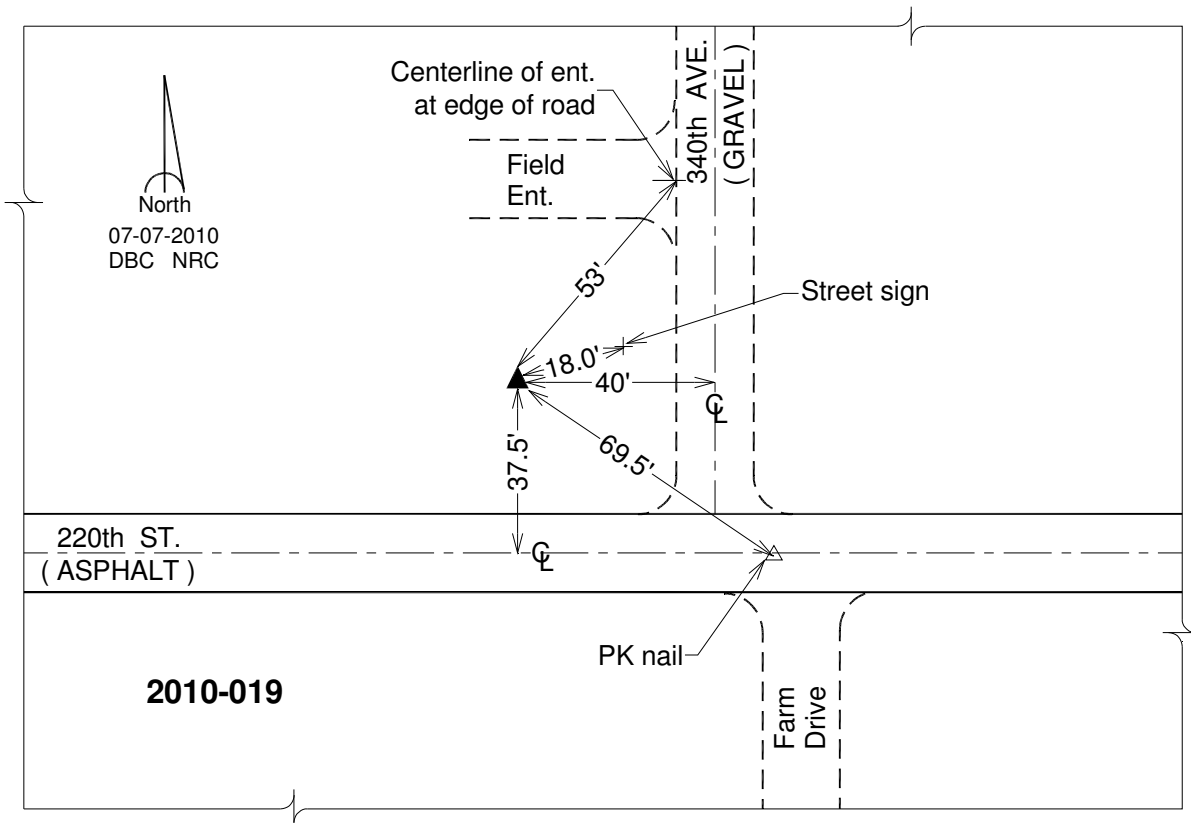
Northing: **692091.87**sft Easting: **2475947.10**sft

Orthometric Height: **658.80**sft Ellipsoid Height: **550.83**sft **Geoid12A**

Latitude: **N41°51'32.77023"** Longitude: **W90°25'56.36027"**

Mapping Angle: **2°01'14"** Combination Scale Factor: **0.999988050**

Monument Type: Berntsen 3/4" Top Security Rod Monument with a 2-1/2" dia. domed survey cap and permanent magnet encased in a white PVC pipe with a NGS style alum. access cover.



This document was prepared by DCI on 05-29-2013 for use by Clinton County, Iowa.