

Clinton County, Iowa
Iowa South Zone (1402)
Horiz. Datum: **NAD83(NA2011)**
Vert. Datum: NAVD 1988
US Survey Feet
2013

Point Name: **20**

Designation: 2005-506 City of Clinton, Iowa GPS Control Pt (Set by DCI in 2005)

Northing: **687261.05sft** Easting: **2497321.09sft**

Orthometric Height: **711.95sft** Ellipsoid Height: **603.73sft** **Geoid12A**

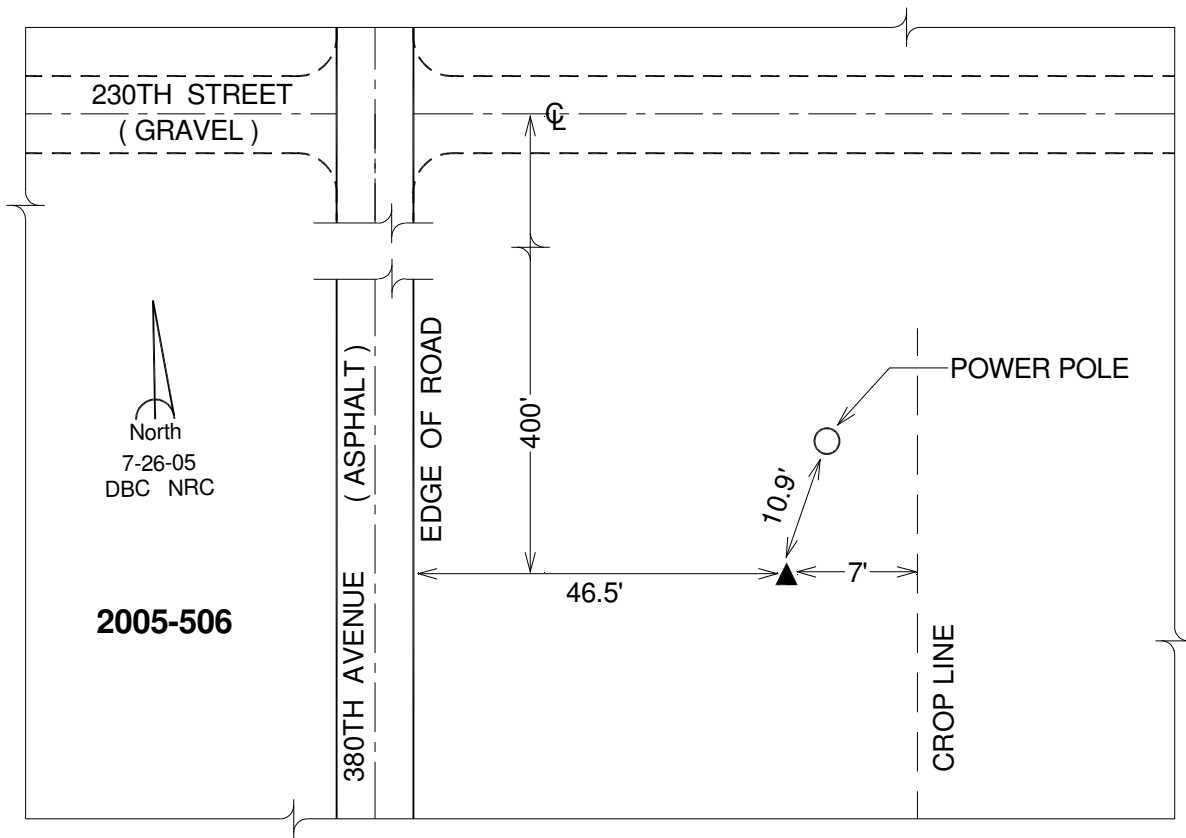
Latitude: **N41°50'37.53717"**

Longitude: **W90°21'16.40021"**

Mapping Angle: **2°04'19"**

Combination Scale Factor: **0.999982481**

Monument Type: Berntsen Top Security Rod Monument with a 2-1/2" dia. domed survey cap and permanent magnet encased in a 5" dia. PVC pipe with a NGS style alum. access cover.



This document was prepared by DCI on 05-29-2013 for use by Clinton County, Iowa.