

Clinton County, Iowa
 Iowa South Zone (1402)
 Horiz. Datum: **NAD83(NA2011)**
 Vert. Datum: NAVD 1988
 US Survey Feet
2013

Point Name: **21**

Designation: 2006-021 Clinton Co Monument (Set by Landmark Engr. in 2006)

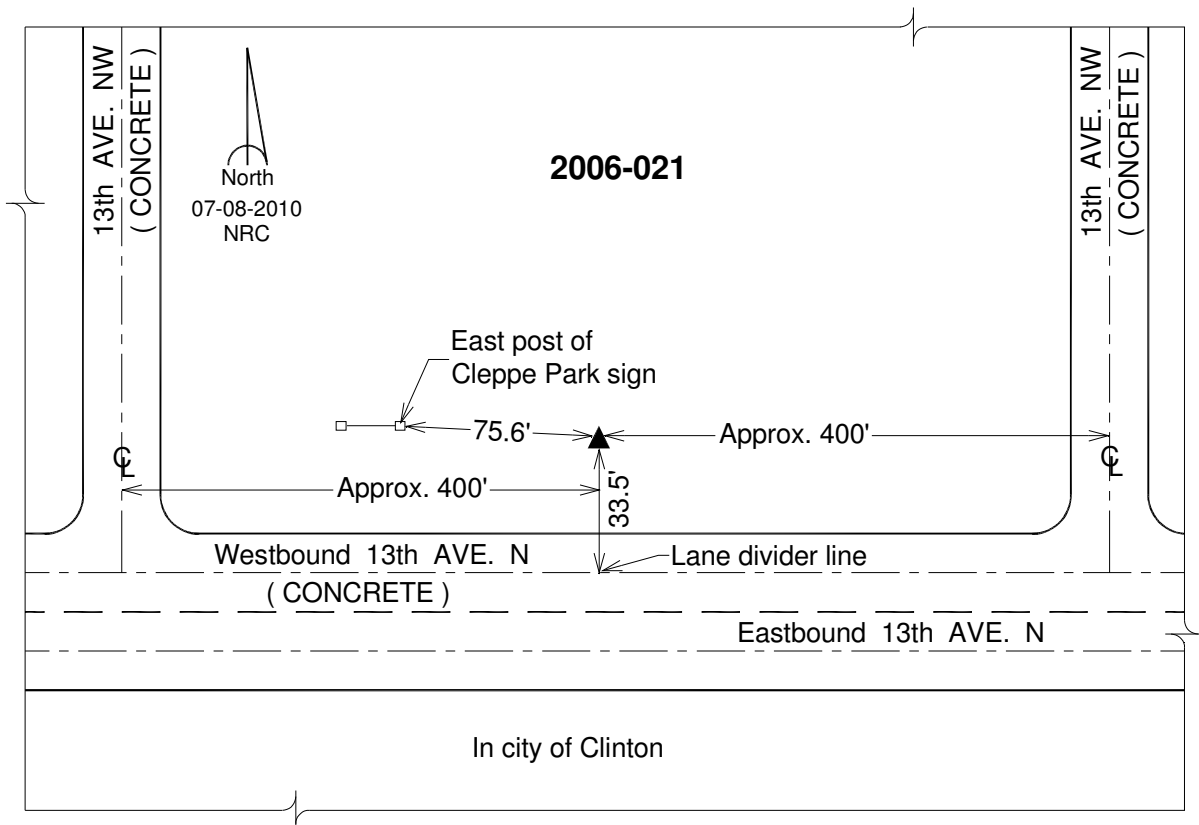
Northing: **694593.80**sft Easting: **2540502.10**sft

Orthometric Height: **661.57**sft Ellipsoid Height: **552.95**sft **Geoid12A**

Latitude: **N41°51'34.11464"** Longitude: **W90°11'42.63879"**

Mapping Angle: **2°10'37"** Combination Scale Factor: **0.999988024**

Monument Type: 3/4" x 7' aluminum rod monument encased in a PVC sleeve.



This document was prepared by DCI on 05-29-2013 for use by Clinton County, Iowa.