

**Clinton County, Iowa**  
Iowa South Zone (1402)  
Horiz. Datum: **NAD83(NA2011)**  
Vert. Datum: NAVD 1988  
US Survey Feet  
**2013**

Point Name: **24**

**Designation:** 2005-642 Scott Co GPS Control Pt (Set by DCI in 2005)

Northing: **655956.02sft**    Easting: **2408149.70sft**

Orthometric Height: **640.80sft**    Ellipsoid Height: **533.30sft**    **Geoid12A**

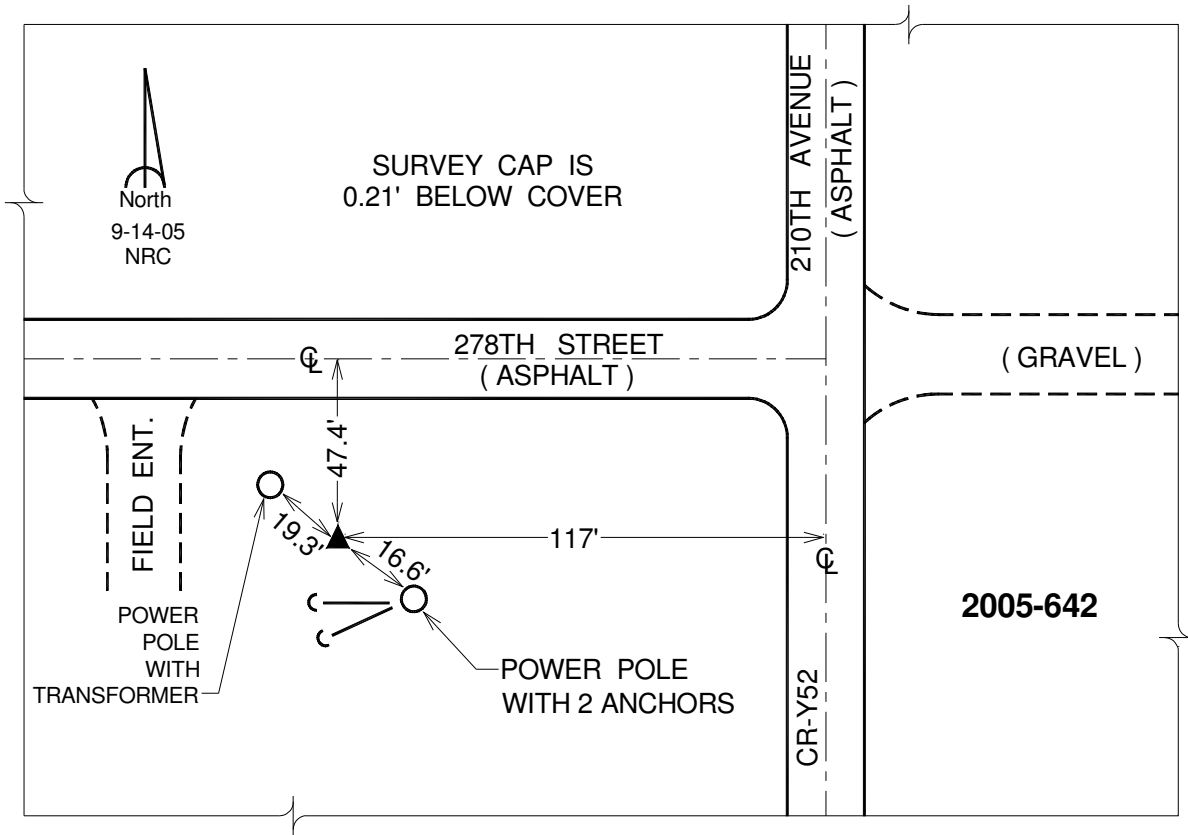
Latitude: **N41°45'58.62467"**

Longitude: **W90°41'07.26968"**

Mapping Angle: **1°51'14"**

Combination Scale Factor: **0.999971570**

**Monument Type:** Berntsen Top Security Rod Monument with a 2-1/2" dia. domed survey cap and permanent magnet encased in a 5" dia. PVC pipe with a NGS style alum. access cover.



*This document was prepared by DCI on 05-29-2013 for use by Clinton County, Iowa.*