

Clinton County, Iowa
 Iowa South Zone (1402)
 Horiz. Datum: **NAD83(NA2011)**
 Vert. Datum: NAVD 1988
 US Survey Feet
2013

Point Name: **25**

Designation: 2005-611 Scott Co GPS Control Pt (Set by DCI in 2005)

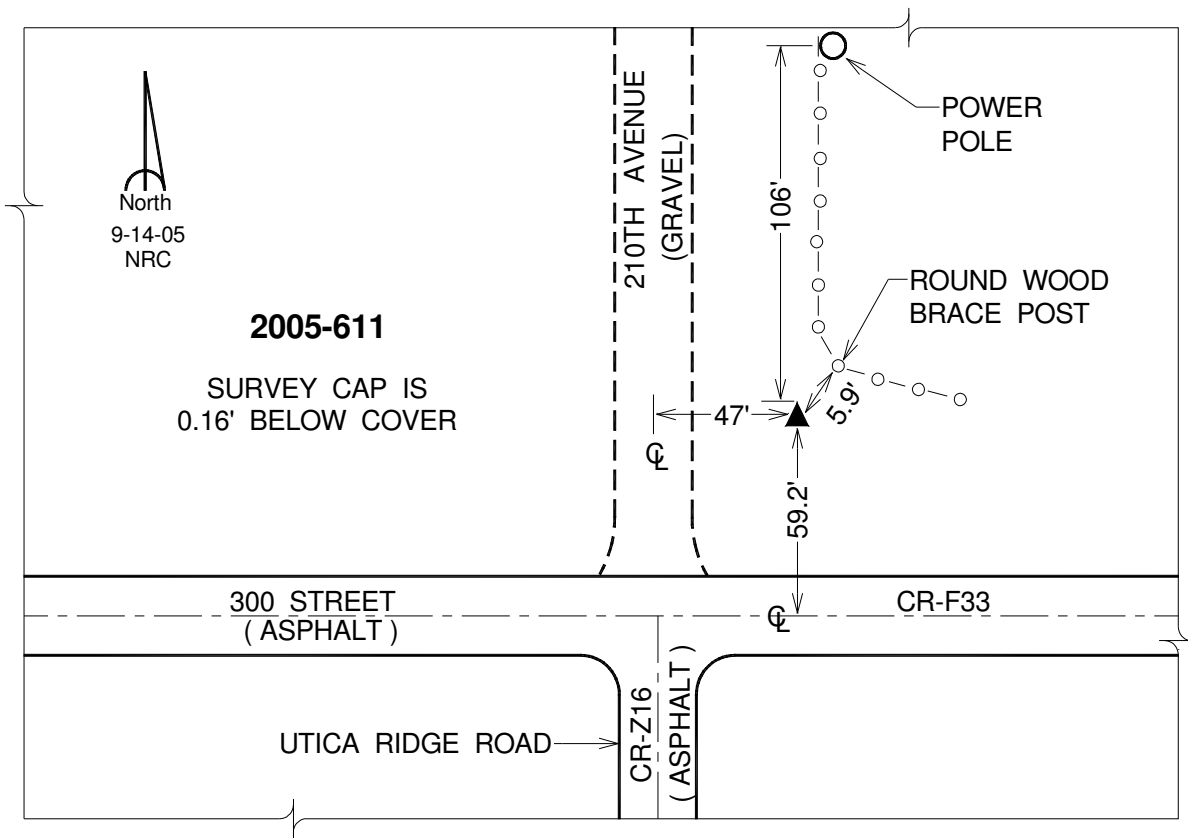
Northing: **649122.28**sft Easting: **2461574.36**sft

Orthometric Height: **613.34**sft Ellipsoid Height: **505.47**sft **Geoid12A**

Latitude: **N41°44'33.48259"** Longitude: **W90°29'25.82157"**

Mapping Angle: **1°58'56"** Combination Scale Factor: **0.999968908**

Monument Type: Berntsen Top Security Rod Monument with a 2-1/2" dia. domed survey cap and permanent magnet encased in a 5" dia. PVC pipe with a NGS style alum. access cover.



This document was prepared by DCI on 05-29-2013 for use by Clinton County, Iowa.