

Clinton County, Iowa
Iowa South Zone (1402)
Horiz. Datum: **NAD83(NA2011)**
Vert. Datum: NAVD 1988
US Survey Feet
2013

Point Name: **26**

Designation: 2005-513 City of Clinton, Iowa GPS Control Pt (Set by DCI in 2005)

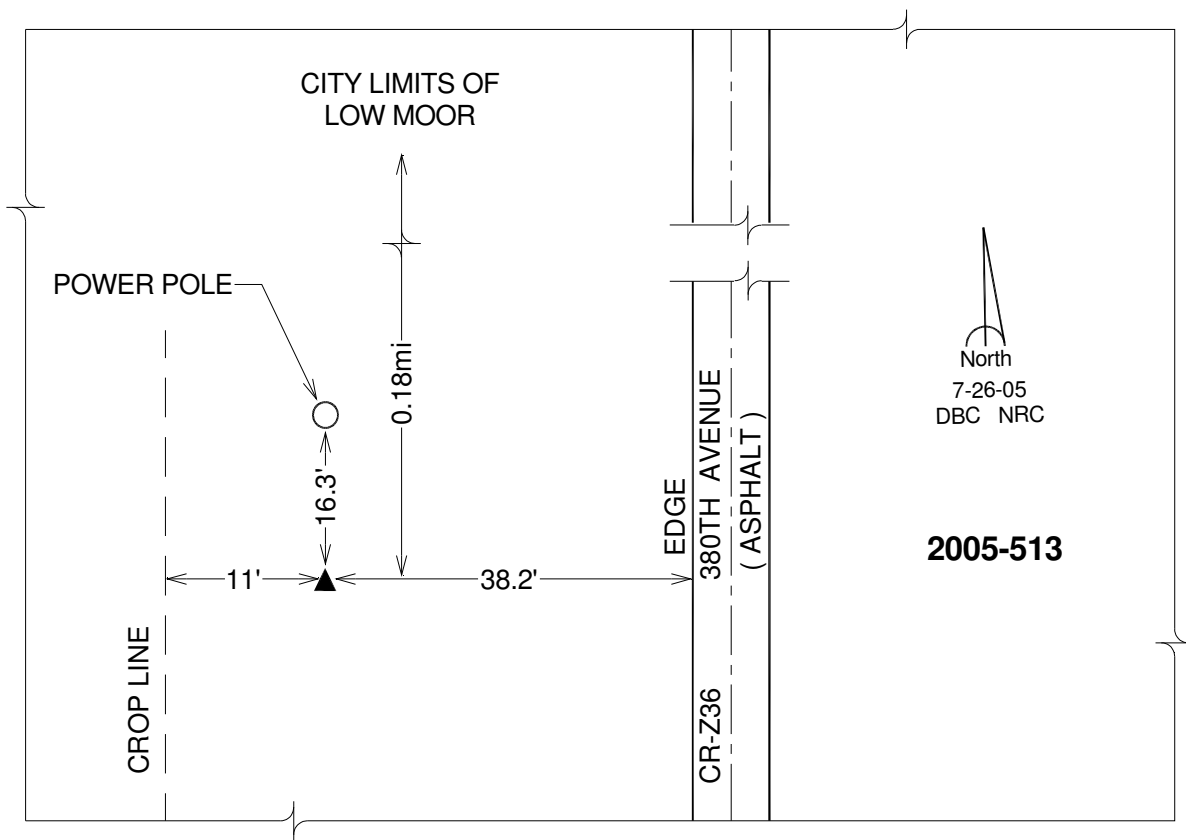
Northing: **669439.19sft** Easting: **2497826.22sft**

Orthometric Height: **650.09sft** Ellipsoid Height: **541.86sft** **Geoid12A**

Latitude: **N41°47'41.40703"** Longitude: **W90°21'18.24231"**

Mapping Angle: **2°04'18"** Combination Scale Factor: **0.999976207**

Monument Type: Berntsen Top Security Rod Monument with a 2-1/2" dia. domed survey cap and permanent magnet encased in a 5" dia. PVC pipe with a NGS style alum. access cover.



This document was prepared by DCI on 05-29-2013 for use by Clinton County, Iowa.