

**Clinton County, Iowa**  
Iowa South Zone (1402)  
Horiz. Datum: **NAD83(NA2011)**  
Vert. Datum: NAVD 1988  
US Survey Feet  
**2013**

Point Name: **27**

**Designation:** 2006-027 Clinton Co Monument (Set by Landmark Engr. in 2006)

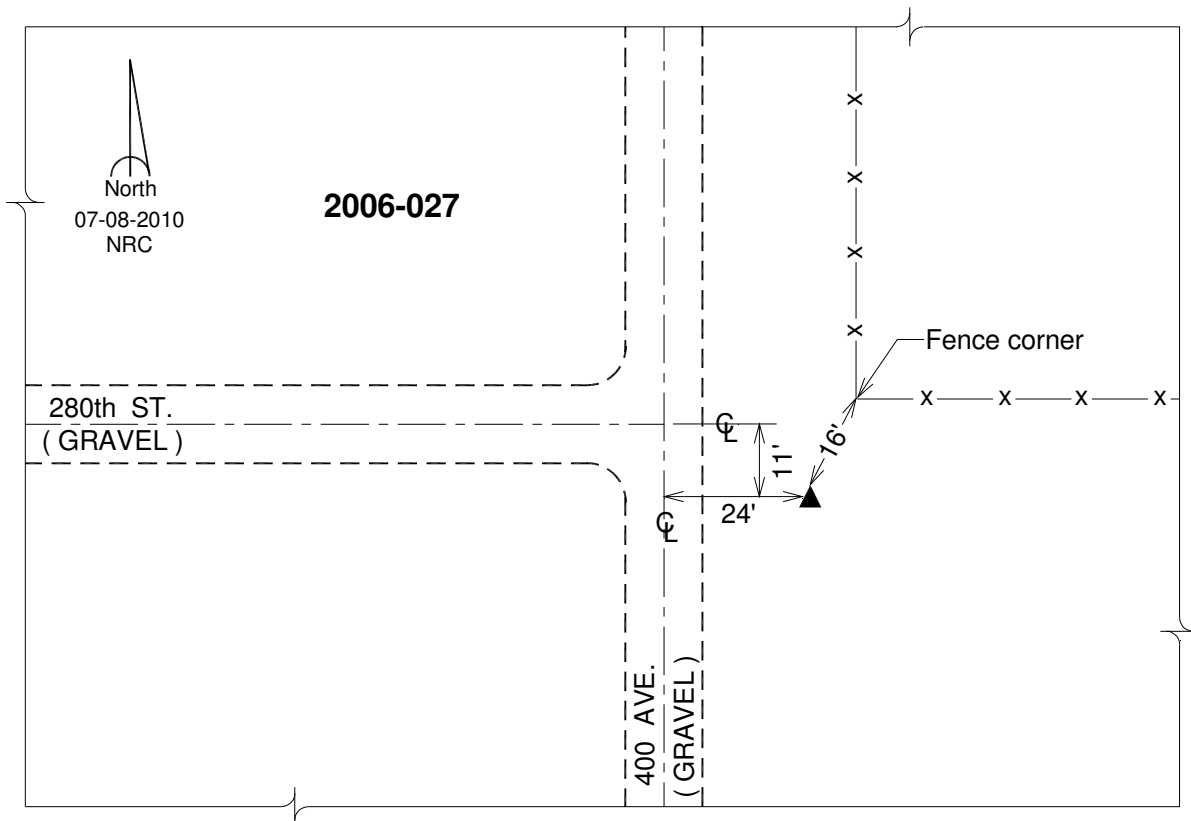
Northing: **661492.24sft**    Easting: **2508795.68sft**

Orthometric Height: **641.10sft**    Ellipsoid Height: **532.77sft**    **Geoid12A**

Latitude: **N41°46'19.00710"**    Longitude: **W90°18'57.36298"**

Mapping Angle: **2°05'50"**    Combination Scale Factor: **0.999972577**

**Monument Type:** 3/4" x 7' aluminum rod monument encased in a PVC sleeve.



*This document was prepared by DCI on 05-29-2013 for use by Clinton County, Iowa.*