

Clinton County, Iowa
Iowa South Zone (1402)
Horiz. Datum: **NAD83(NA2011)**
Vert. Datum: NAVD 1988
US Survey Feet
2013

Point Name: **501**

Designation: 2005-501 City of Clinton, Iowa GPS Control Pt (Set by DCI in 2005)

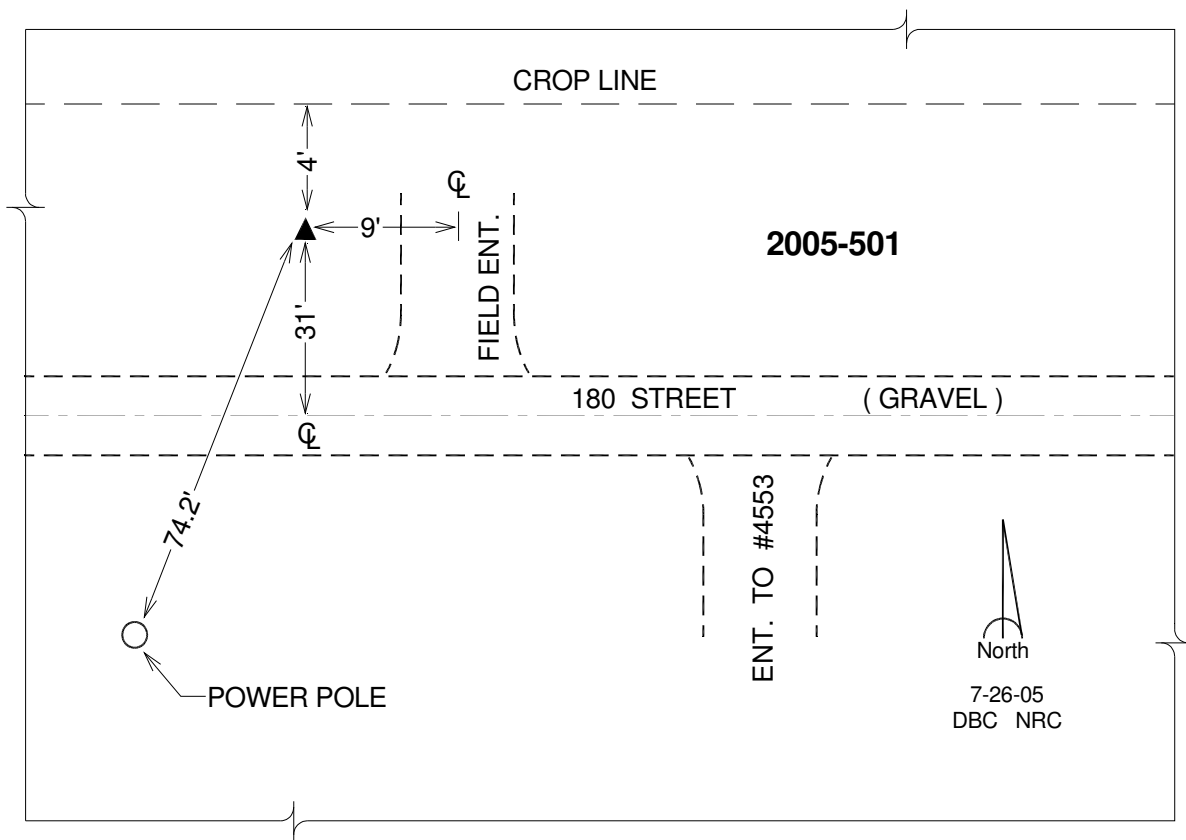
Northing: **715596.09sft** Easting: **2536255.31sft**

Orthometric Height: **788.65sft** Ellipsoid Height: **680.09sft** **Geoid12A**

Latitude: **N41°55'03.03541"** Longitude: **W90°12'28.21740"**

Mapping Angle: **2°10'07"** Combination Scale Factor: **0.999994132**

Monument Type: Berntsen Top Security Rod Monument with a 2-1/2" dia. domed survey cap and permanent magnet encased in a 5" dia. PVC pipe with a NGS style alum. access cover.



This document was prepared by DCI on 05-29-2013 for use by Clinton County, Iowa.