

**Clinton County, Iowa**  
Iowa South Zone (1402)  
Horiz. Datum: **NAD83(NA2011)**  
Vert. Datum: NAVD 1988  
US Survey Feet  
**2013**

Point Name: **504**

**Designation:** 2005-504 City of Clinton, Iowa GPS Control Pt (Set by DCI in 2005)

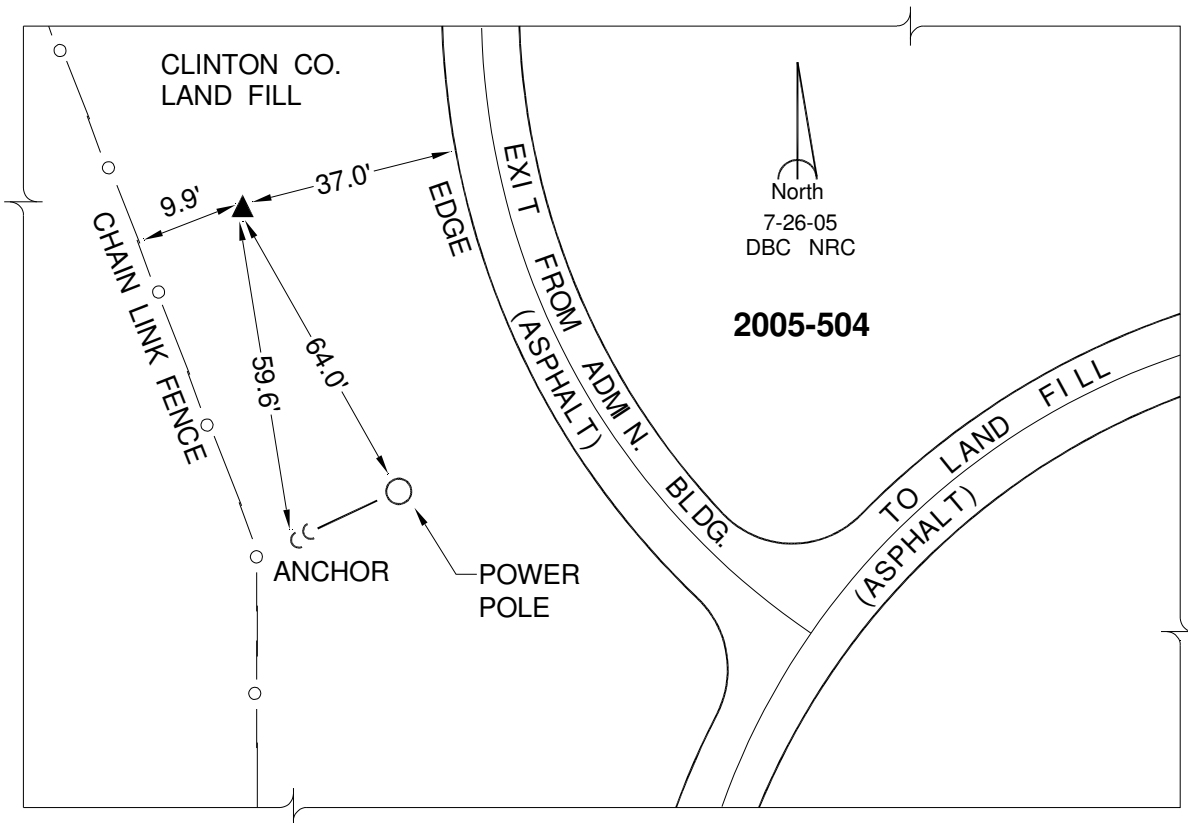
Northing: **695441.85sft**    Easting: **2522758.65sft**

Orthometric Height: **708.64sft**    Ellipsoid Height: **600.18sft**    **Geoid12A**

Latitude: **N41°51'49.07941"**    Longitude: **W90°15'36.53604"**

Mapping Angle: **2°08'03"**    Combination Scale Factor: **0.999986608**

**Monument Type:** Berntsen Top Security Rod Monument with a 2-1/2" dia. domed survey cap and permanent magnet encased in a 5" dia. PVC pipe with a NGS style alum. access cover.



*This document was prepared by DCI on 05-29-2013 for use by Clinton County, Iowa.*