

Clinton County, Iowa
Iowa South Zone (1402)
Horiz. Datum: **NAD83(NA2011)**
Vert. Datum: NAVD 1988
US Survey Feet
2013

Point Name: **512**

Designation: 2005-512 City of Clinton, Iowa GPS Control Pt (Set by DCI in 2005)

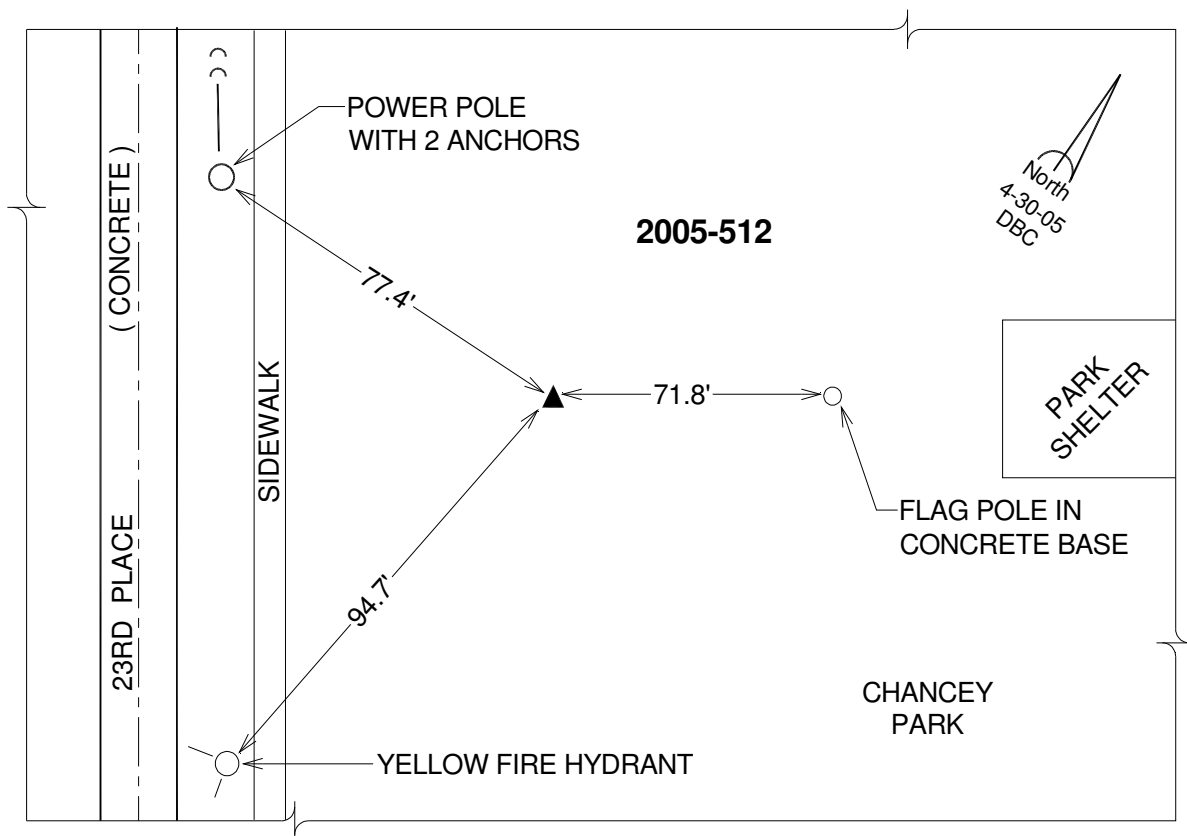
Northing: **681474.51**sft Easting: **2536389.17**sft

Orthometric Height: **634.08**sft Ellipsoid Height: **525.48**sft **Geoid12A**

Latitude: **N41°49'26.14073"** Longitude: **W90°12'43.50350"**

Mapping Angle: **2°09'57"** Combination Scale Factor: **0.999982386**

Monument Type: Berntsen Top Security Rod Monument with a 2-1/2" dia. domed survey cap and permanent magnet encased in a 5" dia. PVC pipe with a NGS style alum. access cover.



This document was prepared by DCI on 05-29-2013 for use by Clinton County, Iowa.