

Clinton County, Iowa
Iowa South Zone (1402)
Horiz. Datum: **NAD83(NA2011)**
Vert. Datum: NAVD 1988
US Survey Feet
2013

Point Name: **514**

Designation: 2005-514 City of Clinton, Iowa GPS Control Pt (Set by DCI in 2005)

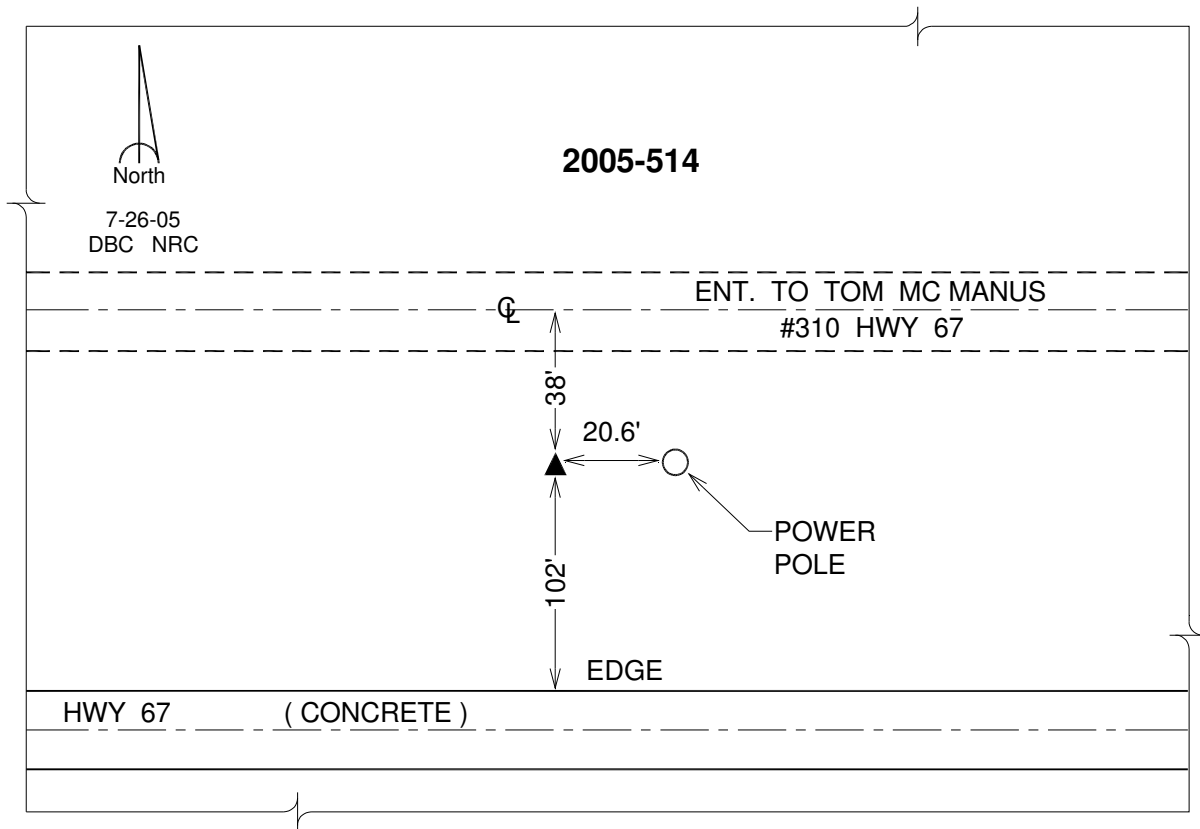
Northing: **671539.52sft** Easting: **2525842.85sft**

Orthometric Height: **596.17sft** Ellipsoid Height: **487.67sft** **Geoid12A**

Latitude: **N41°47'51.97379"** Longitude: **W90°15'07.59685"**

Mapping Angle: **2°08'22"** Combination Scale Factor: **0.999979326**

Monument Type: Berntsen Top Security Rod Monument with a 2-1/2" dia. domed survey cap and permanent magnet encased in a 5" dia. PVC pipe with a NGS style alum. access cover.



This document was prepared by DCI on 05-29-2013 for use by Clinton County, Iowa.