

**Clinton County, Iowa**  
 Iowa South Zone (1402)  
 Horiz. Datum: **NAD83(NA2011)**  
 Vert. Datum: NAVD 1988  
 US Survey Feet  
**2013**

Point Name: **518**

**Designation:** CBN horizontal control station "RISL A" PID: AE9310

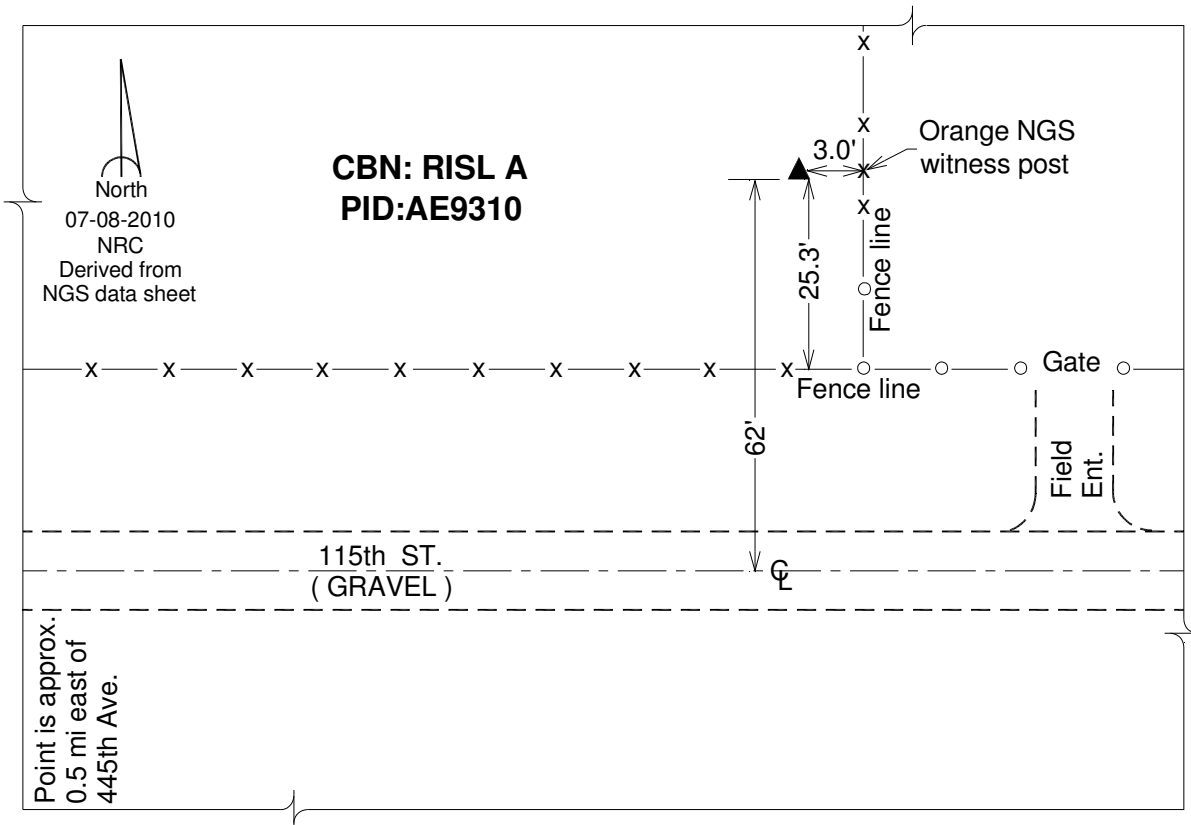
Northing: **749801.31sft**    Easting: **2530404.05sft**

Orthometric Height: **797.45sft**    Ellipsoid Height: **688.95sft**    **Geoid12A**

Latitude: **N42°00'42.87576"**    Longitude: **W90°13'28.52291"**

Mapping Angle: **2°09'27"**    Combination Scale Factor: **1.000015724**

**Monument Type:** Datum point on the top of a stainless steel rod in greased sleeve, surrounded by a 5" dia. PVC pipe with a NGS logo cover stamped "RISL A 1997".



*This document was prepared by DCI on 05-29-2013 for use by Clinton County, Iowa.*