

Clinton County, Iowa
Iowa South Zone (1402)
Horiz. Datum: **NAD83(NA2011)**
Vert. Datum: NAVD 1988
US Survey Feet
2013

Point Name: **549**

Designation: WS-17 Whiteside Co, Illinois GPS Control Pt (Set by ASI in 1991)

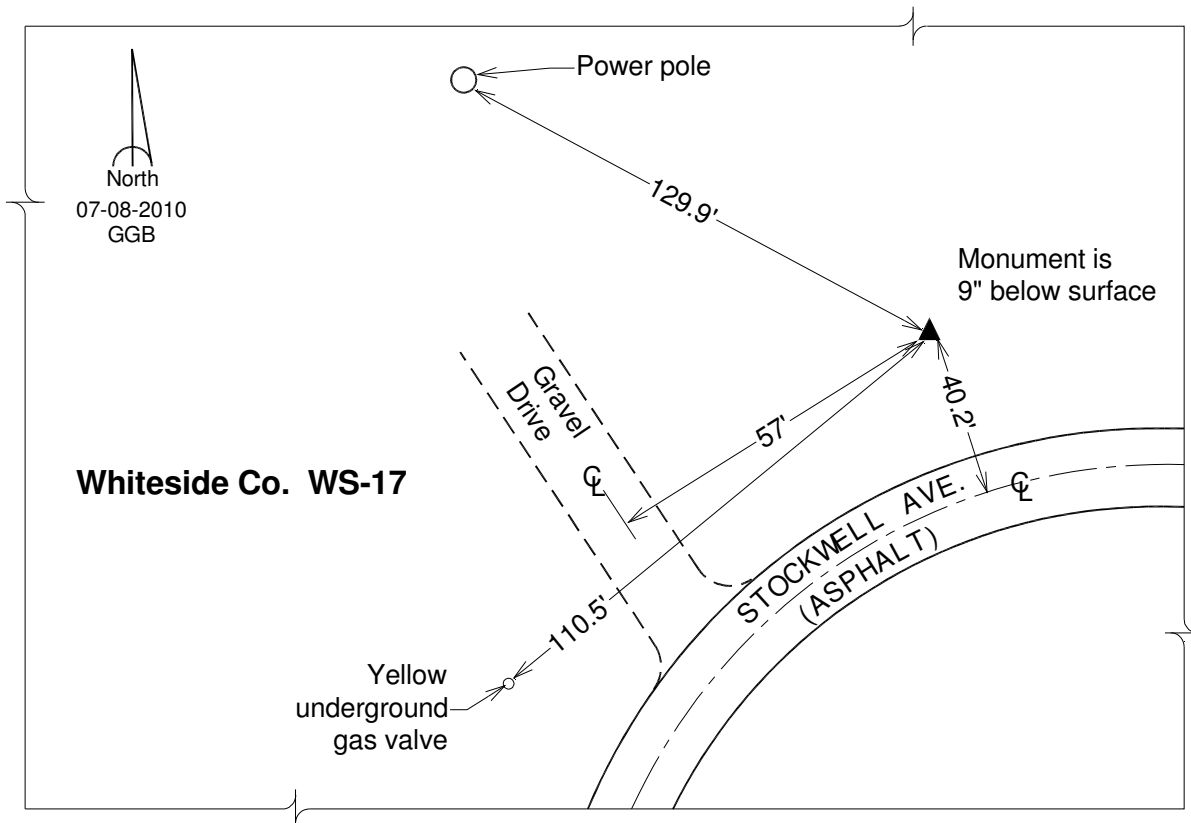
Northing: **707635.91sft** Easting: **2536361.59sft**

Orthometric Height: **705.50sft** Ellipsoid Height: **596.93sft** **Geoid12A**

Latitude: **N41°53'44.41474"** Longitude: **W90°12'30.79571"**

Mapping Angle: **2°10'05"** Combination Scale Factor: **0.999993398**

Monument Type: Mech. Driven aluminum rod with 3-1/4" dia. aluminum survey cap with a permanent magnet encased in a 6" dia. PVC pipe with a aluminum access cover.



This document was prepared by DCI on 05-29-2013 for use by Clinton County, Iowa.