

Clinton County, Iowa
Iowa South Zone (1402)
Horiz. Datum: **NAD83(NA2011)**
Vert. Datum: NAVD 1988
US Survey Feet
2013

Point Name: **602**

Designation: 2005-602 Scott Co GPS Control Pt (Set by DCI in 2005)

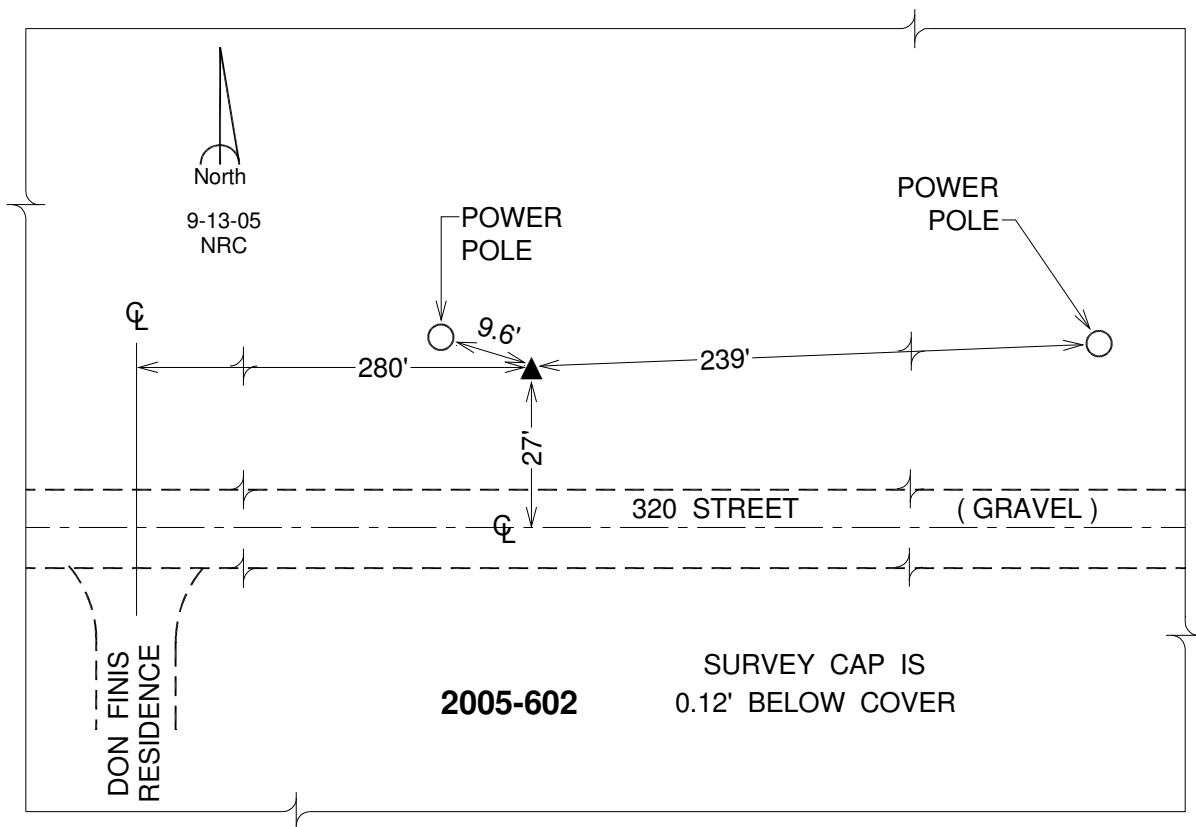
Northing: **656550.91sft** Easting: **2365341.00sft**

Orthometric Height: **706.44sft** Ellipsoid Height: **599.18sft** **Geoid12A**

Latitude: **N41°46'17.80072"** Longitude: **W90°50'31.66766"**

Mapping Angle: **1°45'03"** Combination Scale Factor: **0.999969349**

Monument Type: Berntsen Top Security Rod Monument with a 2-1/2" dia. domed survey cap and permanent magnet encased in a 5" dia. PVC pipe with a NGS style alum. access cover.



This document was prepared by DCI on 05-29-2013 for use by Clinton County, Iowa.