

Clinton County, Iowa
Iowa South Zone (1402)
Horiz. Datum: **NAD83(NA2011)**
Vert. Datum: NAVD 1988
US Survey Feet
2013

Point Name: **609**

Designation: 2005-609 Scott Co GPS Control Pt (Set by DCI in 2005)

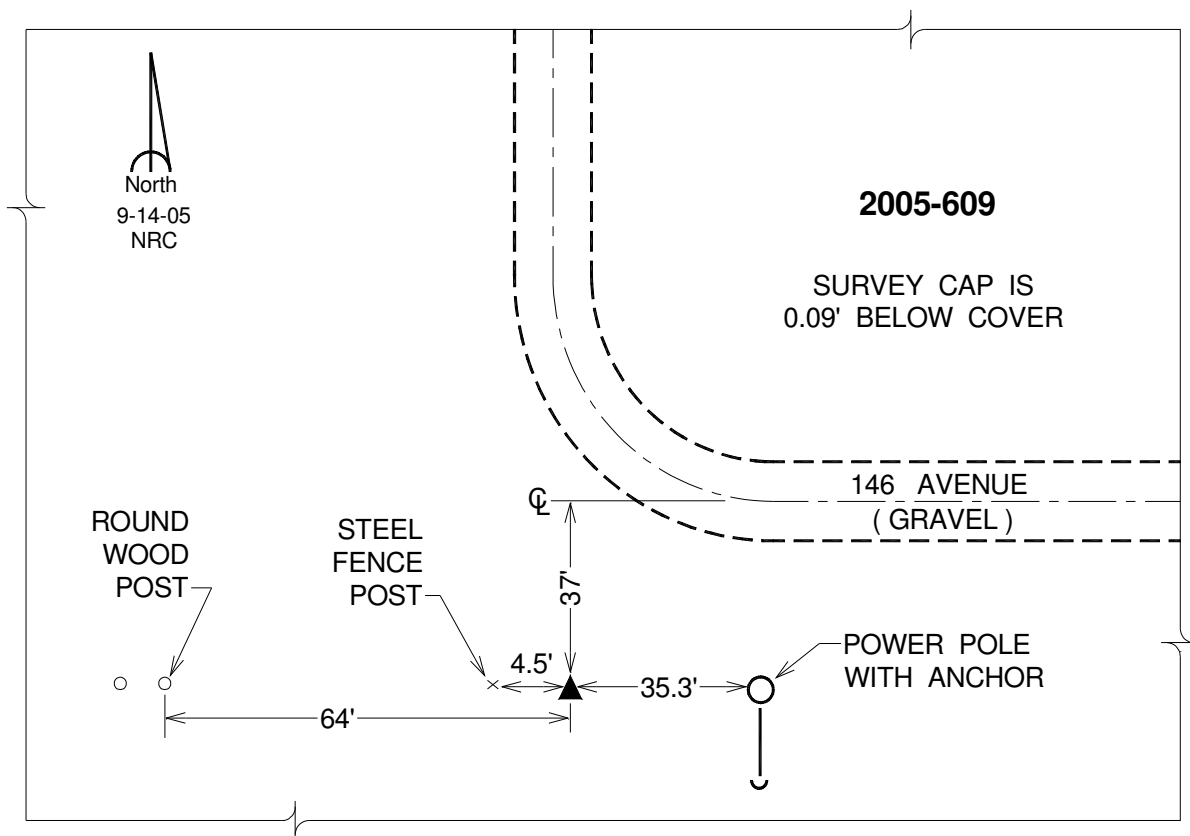
Northing: **649119.56**sft Easting: **2427116.01**sft

Orthometric Height: **681.77**sft Ellipsoid Height: **574.14**sft **Geoid12A**

Latitude: **N41°44'44.98501"** Longitude: **W90°37'00.11854"**

Mapping Angle: **1°53'57"** Combination Scale Factor: **0.999966161**

Monument Type: Berntsen Top Security Rod Monument with a 2-1/2" dia. domed survey cap and permanent magnet encased in a 5" dia. PVC pipe with a NGS style alum. access cover.



This document was prepared by DCI on 05-29-2013 for use by Clinton County, Iowa.