

Clinton County, Iowa
 Iowa South Zone (1402)
 Horiz. Datum: **NAD83(NA2011)**
 Vert. Datum: NAVD 1988
 US Survey Feet
2013

Point Name: **612**

Designation: 2005-612 Scott Co GPS Control Pt (Set by DCI in 2005)

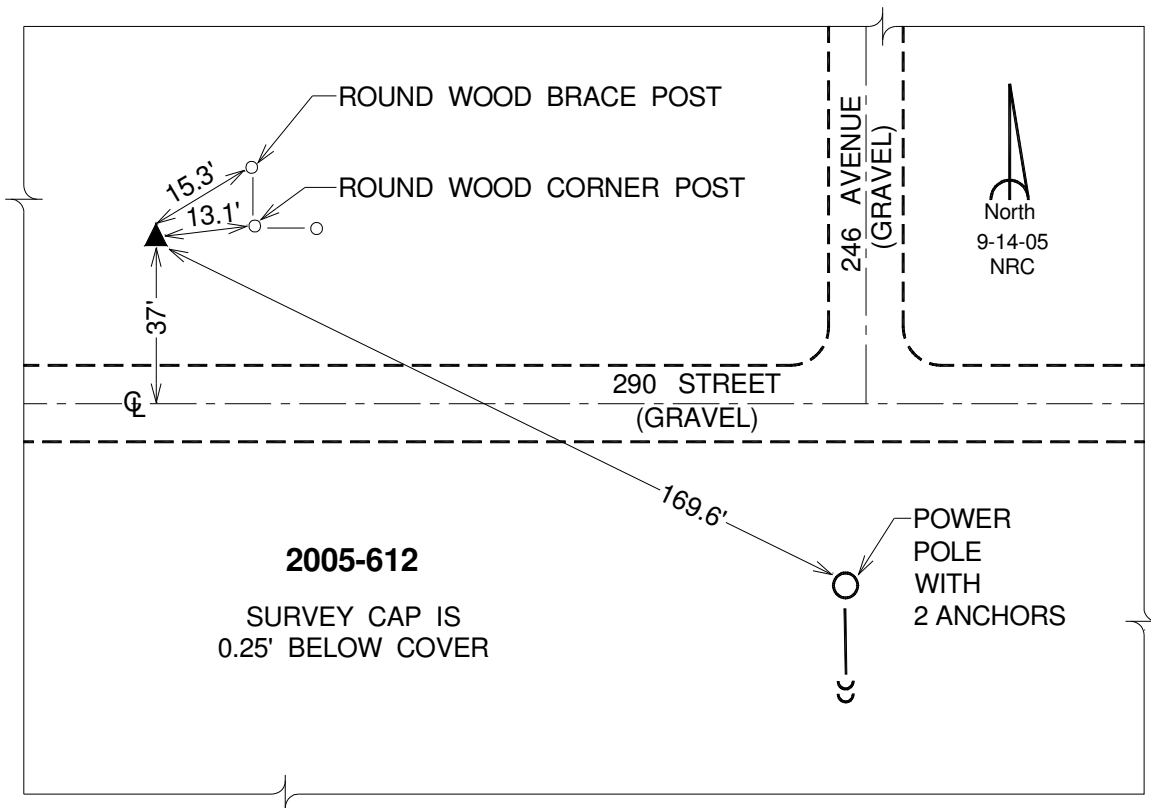
Northing: **644598.11**sft Easting: **2480567.84**sft

Orthometric Height: **609.09**sft Ellipsoid Height: **501.05**sft **Geoid12A**

Latitude: **N41°43'42.24840"** Longitude: **W90°25'17.54415"**

Mapping Angle: **2°01'40"** Combination Scale Factor: **0.999966800**

Monument Type: Berntsen Top Security Rod Monument with a 2-1/2" dia. domed survey cap and permanent magnet encased in a 5" dia. PVC pipe with a NGS style alum. access cover.



This document was prepared by DCI on 05-29-2013 for use by Clinton County, Iowa.