

**Clinton County, Iowa**  
Iowa South Zone (1402)  
Horiz. Datum: **NAD83(NA2011)**  
Vert. Datum: NAVD 1988  
US Survey Feet  
**2013**

Point Name: **643**

**Designation:** 2005-643 Scott Co GPS Control Pt (Set by DCI in 2005)

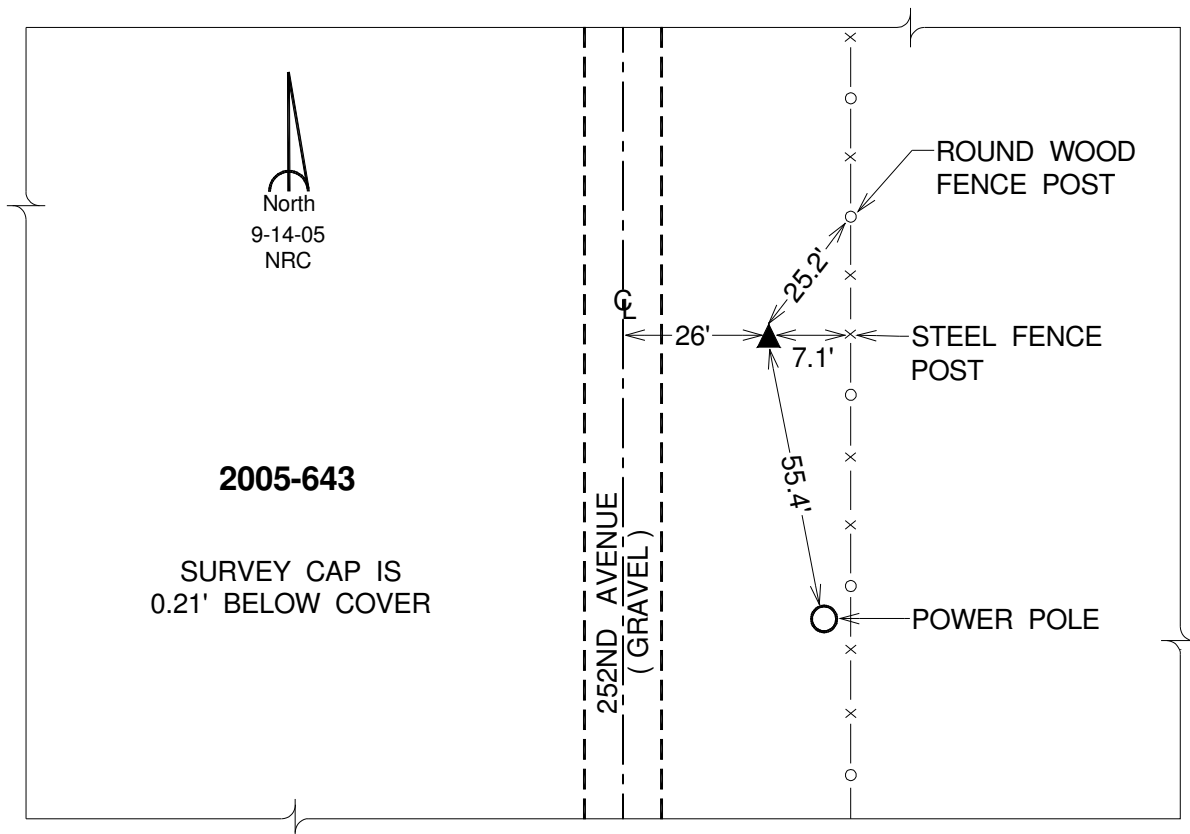
Northing: **664846.42sft**    Easting: **2430549.63sft**

Orthometric Height: **661.43sft**    Ellipsoid Height: **553.83sft**    **Geoid12A**

Latitude: **N41°47'19.14296"**    Longitude: **W90°36'07.93772"**

Mapping Angle: **1°54'32"**    Combination Scale Factor: **0.999974522**

**Monument Type:** Berntsen Top Security Rod Monument with a 2-1/2" dia. domed survey cap and permanent magnet encased in a 5" dia. PVC pipe with a NGS style alum. access cover.



*This document was prepared by DCI on 05-29-2013 for use by Clinton County, Iowa.*