

Clinton County, Iowa
Iowa South Zone (1402)
Horiz. Datum: **NAD83(NA2011)**
Vert. Datum: NAVD 1988
US Survey Feet
2013

Point Name: **5002**

Designation: FBN horizontal control station "E 79" PID: NJ0232

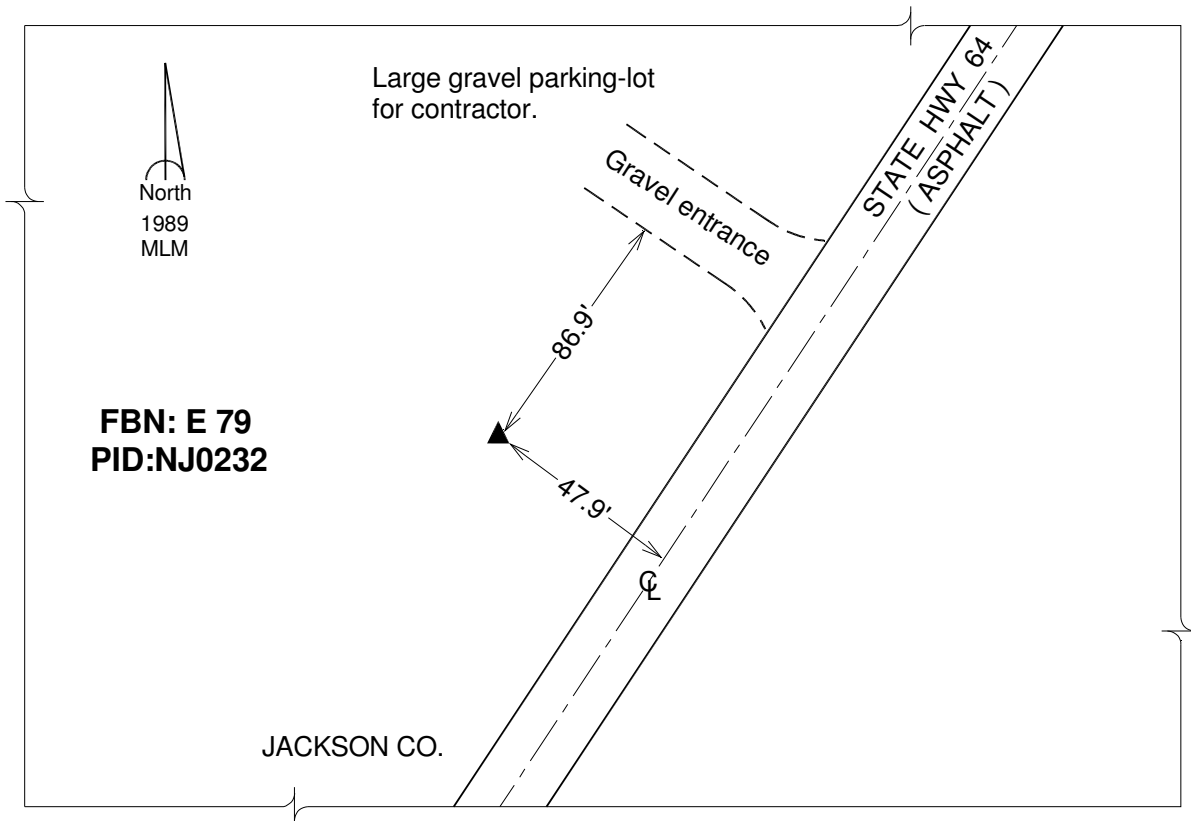
Northing: **761048.77sft** Easting: **2445796.00sft**

Orthometric Height: **885.11sft** Ellipsoid Height: **777.57sft** **Geoid12A**

Latitude: **N42°03'03.88820"** Longitude: **W90°32'03.50577"**

Mapping Angle: **1°57'13"** Combination Scale Factor: **1.000021434**

Monument Type: A standard bench mark disk set in the top of a concrete monument.



This document was prepared by DCI on 05-29-2013 for use by Clinton County, Iowa.